

2928T Trailer Mounting

6" Trash Pumps

Available on trailer or skid

**Backed By CH&E
Limited Warranty**

Diesel Engine Powered

Pump Specifications

Pump	2828
Size	6" x 6" Female NPT
Construction	Class 30 Cast Iron
Impeller	Ductile Iron – 3 Vane – Passes 3" Spherical Solids
Volute	Ductile Iron
Seal	Double Grease Seal – Spring (SS) Loaded Carbon Ceramic Faces
Cover	Class 30 Cast Iron
Bearings	1 Double Row & 1 Single Row Ball Bearing
Check Valve	Cloth Reinforced Rubber
Valve Seat	Class 30 Cast Iron
Gaskets	Cellulose Fiber & Buna
"O" Rings	Neoprene
Suction Elbow	Class 30 Cast Iron

STANDARD EQUIPMENT

90° Flanged Discharge Elbow
Structural Steel Skid Base
25 Gallon Steel Fuel Tank with Fuel Gauge

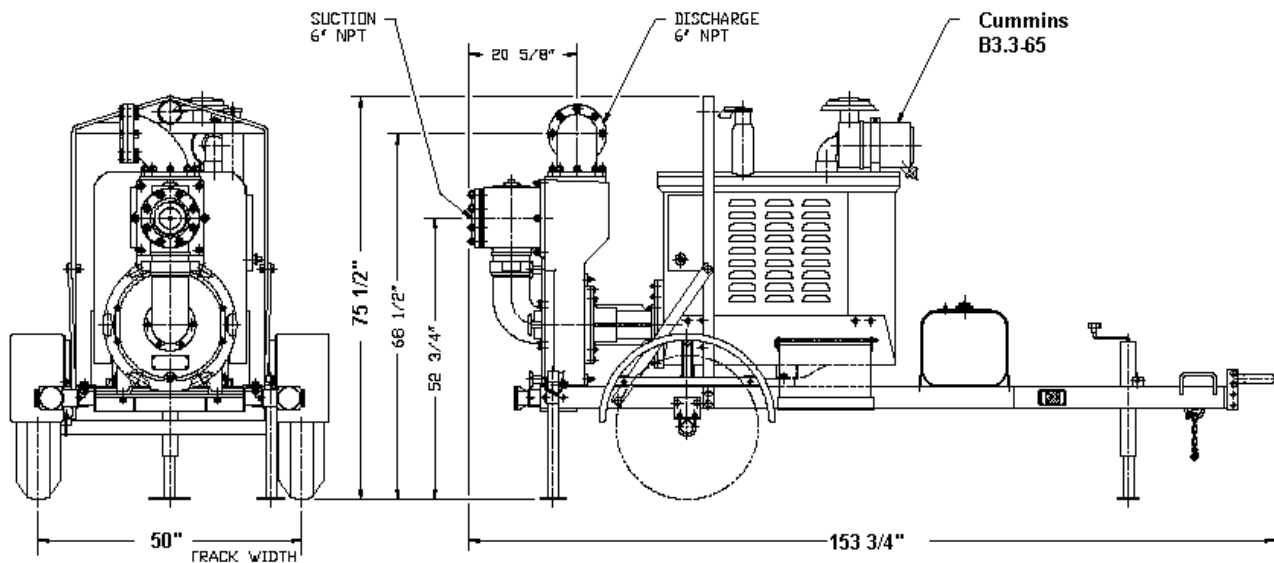
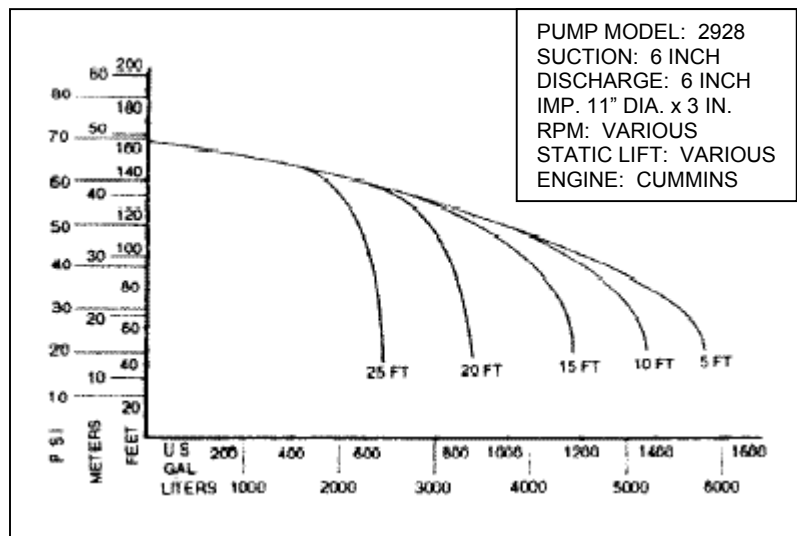
OPTIONAL EQUIPMENT

- Trailer Package:
Highway Tires, DOT Light
Pintle (Ring) Hitch, Safety Chains,
Front & Rear Jack Stands
- Fenders
- Hose Racks
- Torsion Axle Suspension
- 50 Gallon Fuel Tank
- Shutdown – Loss of Pressure
- Ball Hitch
- Warning Light – (amber) 12 Volt
- Seals
Tungsten / Carbide
Silicon / Carbide
- Electric Brakes
- Surge Brakes
- Tongue Jack with Wheel



CH&E

6" Trash Pumps



ENGINE SPECIFICATIONS

MODEL: B3.3-65
TYPE: Diesel
DISPLACEMENT: 3.3 L (199 CID)
COOLING: Liquid
AIR CLEANER: Dry Type
STARTER: 12 Volt Electric
ALTERNATOR: 42 A.
HOUSING: Sheet Metal with Rain Cap

PUMP FEATURES

- **EASY ACCESS TO ALL PARTS**
Without disturbing suction or discharge line
- **DEPENDABLE PRIMING**
At maximum suction lifts
- **EASY OPENING ACCESS WITH HANDSCREWS**
For quick clean out
- **TRASH HANDLING IMPELLER (ductile iron)**
Handles solids and raw sewage

Max. Dyn. BHP 65 @ 2600 RPM

STANDARD ON ENGINE

High Temp. & Low Oil Shutdown
Hour Meter – Tachometer – Hour Meter
Ammeter – Oil Pressure Temp. Gauge
Key Switch

WARNING

**DO NOT USE IN EXPLOSIVE
ATMOSPHERE OR FOR PUMPING
VOLATILE FLAMMABLE LIQUIDS**

CH&E