



## Griffco Valve Inc.

3 North Main Street  
 Middleport, NY 14105  
 Phone: 1 800-474-3326  
 Fax: 1 716-735-3166

# PRESSURE RELIEF VALVE



Griffco diaphragm pressure relief valves are designed to protect chemical feed systems from over pressure damage caused by defective equipment or a blockage in the chemical feed line.. Robust construction ensures reliability in the rigorous service of municipal and industrial applications. Wetted materials include: **PVC, CPVC, PP, PVDF, PTFE, 316 SS, A 20 and Hast. C**  
 Available sizes: 1/2" - 2".

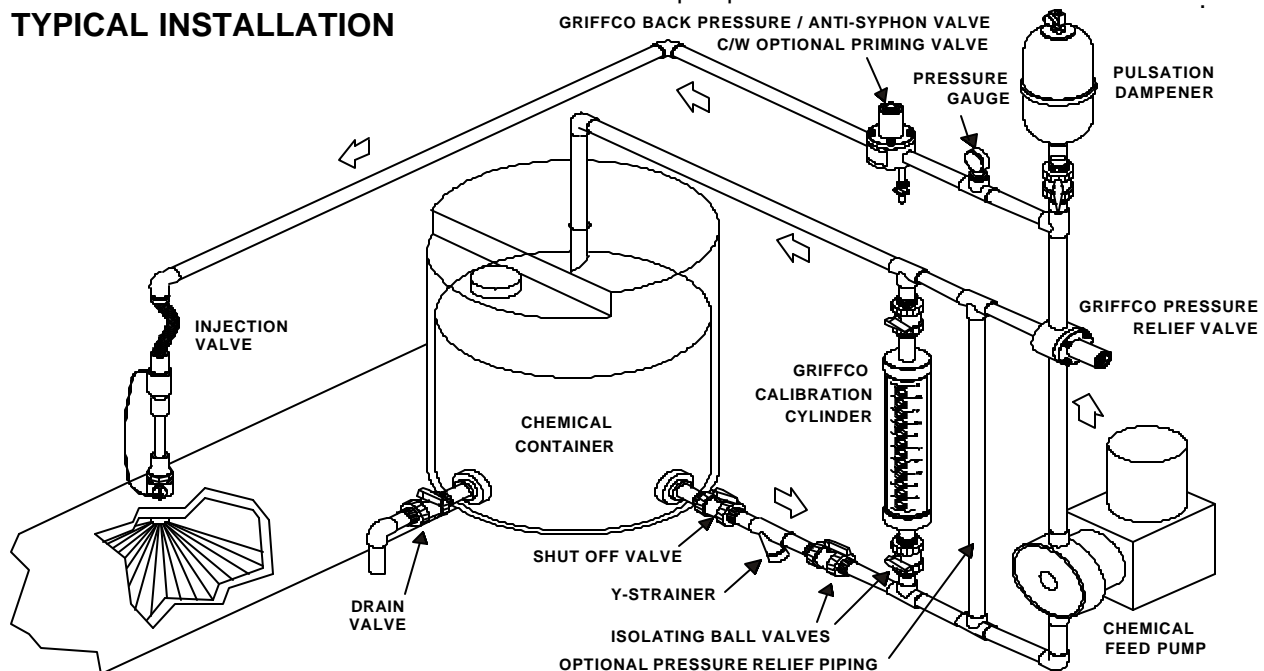
### Features:

- High Reliability / Low Cost
- Robust, Machined Construction
- Vulcanised PTFE/EPDM Diaphragm
- Adjustable 10 - 150 PSI
- Optional 350 PSI Rated Valve
- 2 & 3 Port Configurations
- Ventable to Suction Line
- Wide Range of Materials
- Corrosion Resistant Design

### Operation:

Griffco diaphragm pressure relief valves operate when the pressure in the chemical system exceeds the preset pressure of the valve. The diaphragm is held against the valve seat by an internal spring. When the preset pressure is exceeded the diaphragm is forced up and the chemical flows out the relief port, back to the chemical tank or to the suction side of the pump. The valves are pre-set at 50 psi, however they are field adjustable from 10 - 150 psi, (optional 350 psi) via the adjustment screw. The relief valve should be set approximately 15 psi higher than the system pressure. Installation should be made as close to the pump as possible, without any valves or accessories between the relief valve and the pump. Consult your pump manufacturer for his recommendations.

### TYPICAL INSTALLATION



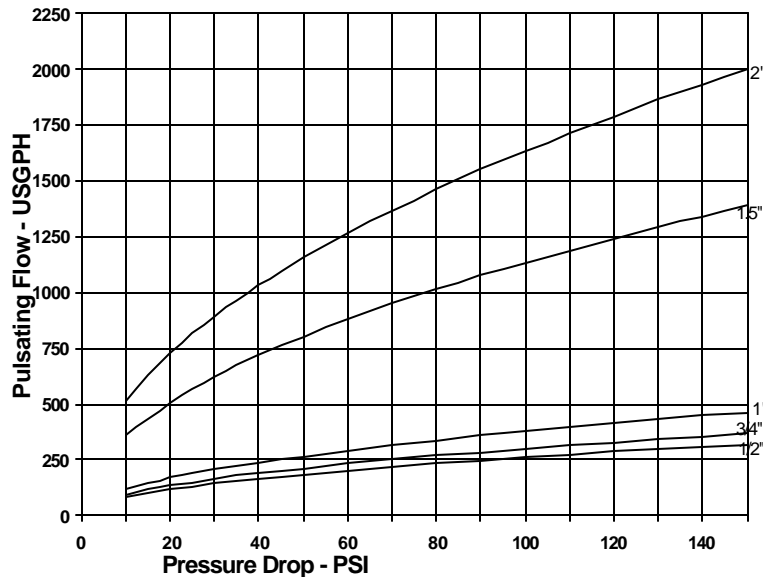
CALL 1 - 800 - GRIFFCO

Bulletin # PRV1003-2002

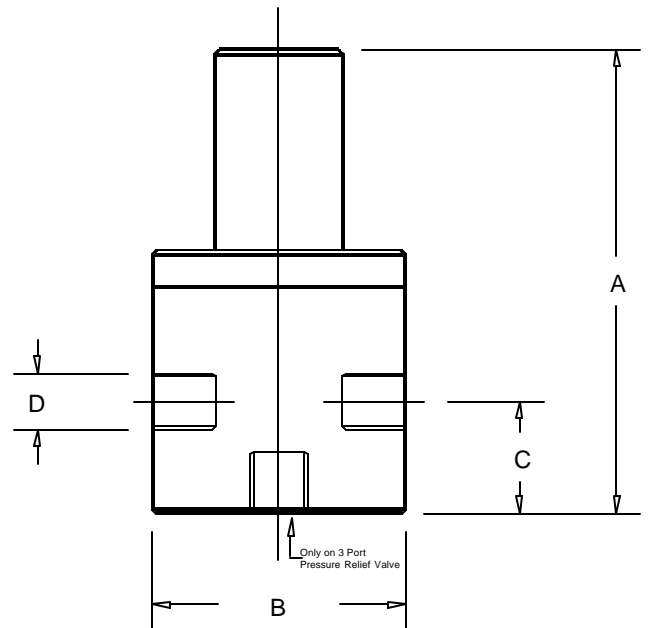
## Technical Data:

<b>Sizes:</b> Model PRV		1/2", 3/4", 1" - 3 port valves : 1 1/2" and 2" - 2 port valves			
<b>Connections:</b>		NPT, Socket, Flange			
<b>Pressure Adjustment</b>		10 - 50 psi, 10 - 150 psi, 50 - 350 psi			
<b>Flow Rates @ 150 psi</b>		<b>Shipping Weight: lbs</b>			
<b>Size</b>	<b>Pulsating</b>	<b>Continuous</b>	<b>Plastic</b>	<b>Metal / Plastic Top</b>	<b>Metal / Metal Top</b>
1/2"	320 USgph	16 USgpm	3.0	5.5	6.5
3/4"	367 USgph	19 USgpm	3.0	5.5	6.5
1"	461 USgph	24 USgpm	3.5	6.0	7.0
1 1/2"	1388 USgph	72 USgpm	9.0	18.5	26.0
2"	2000 USgph	104 USgpm	9.0	20.0	30.0
<b>Max Temperature: (°F)</b>		Plastic: 140° ; Metal: 300°, (Peak Short Term 390°)			
<b>Materials of Construction:</b>					
<b>Diaphragm</b>		PTFE / EPDM, Optional: Viton & PTFE / Viton			
<b>Valve Top</b>		Standard: PVC Optional: CPVC, Steel, 316 SS, Others on Request			
<b>Valve Body</b>		PVC, CPVC, PP, PTFE, PVDF, 316 SS, A 20, Hast. C, Others on Request			

## Performance Curves:



## Dimensions:



## Product Codes For Ordering:

### PRV

1	2	3
<b>1 = Size</b>	<b>2 = Material</b>	<b>3 = Options</b>
050 - 1/2"	P - PVC	V - Viton Diaphragm
075 - 3/4"	P - CPVC	S - Socket Connections
100 - 1"	PP - Polypro	F - Flanged Connections
150 - 1 1/2"	T - PTFE	OS - Optional Steel Top
200 - 2"	K - PVDF	OSS - Optional 316 SS Top
	S - 316 SS	MS - 50 - 350 psi Valve, SteelTop
	A - Alloy 20	MSS - 50 - 350 psi; 316 SS Top
	C - Hastalloy C	

D	A	B	C
1/2"	5.60	3.50	1.10
3/4"	5.60	3.50	1.10
1"	5.90	3.50	1.25
1 1/2"	8.95	4.50	2.10
2"	8.95	5.00	2.10