



Griffco Valve Inc.

3 North Main Street
 Middleport, NY 14105
 Phone: 1 800-474-3326
 Fax: 1 716-735-3166

T-SERIES PRESSURE RELIEF VALVES



Griffco diaphragm pressure relief valves are designed to protect chemical feed systems from over pressure damage caused by defective equipment or a blockage in the chemical feed line. Robust construction ensures reliability in the rigorous service of municipal and industrial applications. Wetted materials include: **PVC, CPVC, PP, PVDF, PTFE, 316 SS, A 20 and Hast. C.**
 Available sizes: 1/4" - 1/2".

Features:

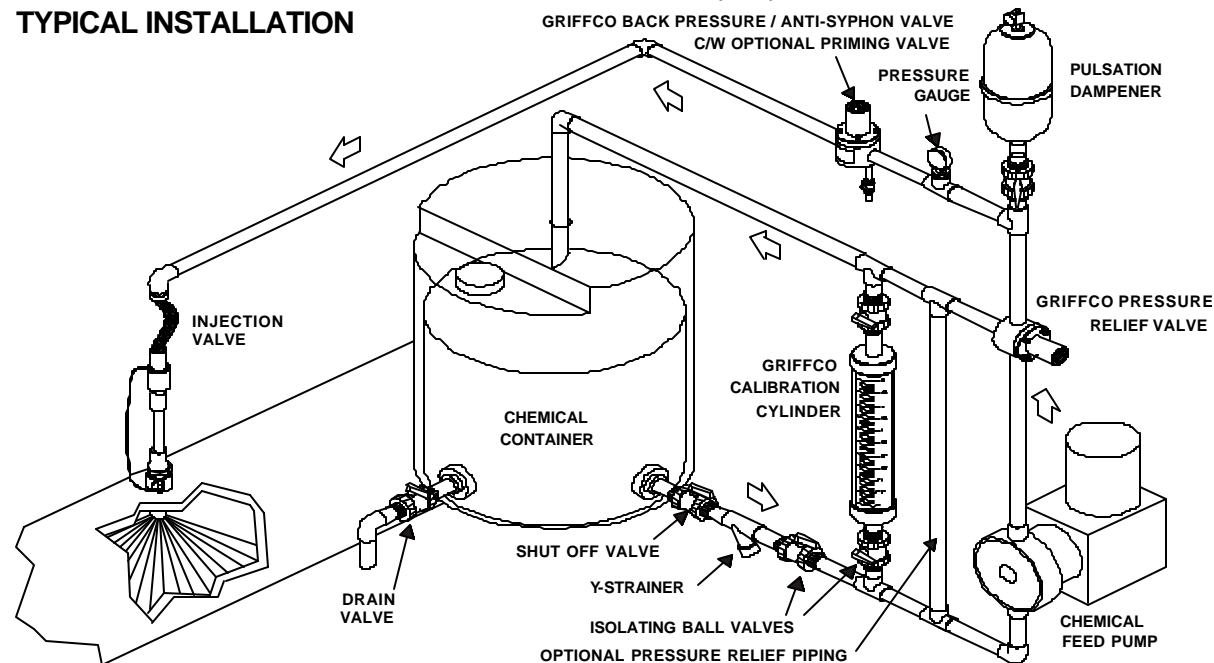
- High Reliability / Low Cost
- No Bolts on Plastic Models
- Compact Size for OEM Applications
- Adjustable 10 - 150 PSI
- Optional 350 PSI Rated Valve
- 3 Port, 2 Port, & 90° Configuration
- Robust, Machined Construction
- Vulcanised PTFE/EPDM Diaphragm
- Wide Range of Materials

Operation:

Griffco diaphragm pressure relief valves operate when the pressure in the chemical system exceeds the preset pressure of the valve. The diaphragm is held against the valve seat by an internal spring. When the preset pressure is exceeded the diaphragm is forced up and the chemical flows out the relief port, back to the chemical tank or to the suction side of the pump.

The valves are pre-set at 50 psi, however they are field adjustable from 10 - 150 psi, (optional 350 psi) via the adjustment screw. The relief valve should be set approximately 15 psi higher than the system pressure. Installation should be made as close to the pump as possible, without any valves or accessories between the relief valve and the pump. Consult your pump manufacturer for his recommendations.

TYPICAL INSTALLATION



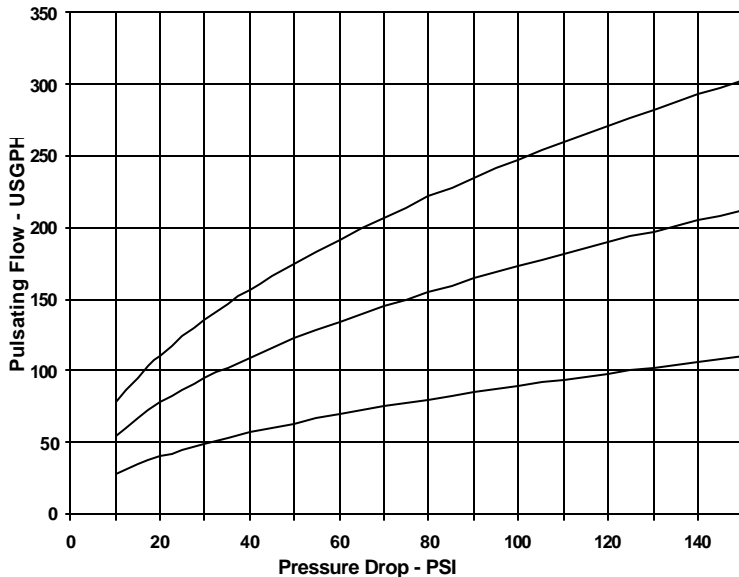
CALL 1 - 800 - GRIFFCO

Bulletin # PRT1003-2002

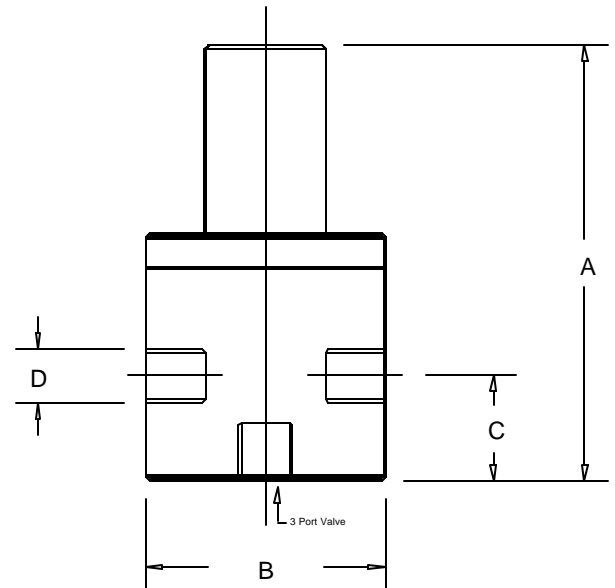
Technical Data:

Sizes: Model PRT		1/4", 3/8", 1/2"			
Connections:		NPT and Socket (3 port, 2 port & 90° Configuration)			
Pressure Adjustment		10 - 50 psi, 10 - 150 psi, 50 - 350 psi			
Flow Rates @ 150 psi		Shipping Weight: lbs			
Size	Pulsating	Continuous	Plastic	Metal / Plastic Top	Metal / Metal Top
1/4"	100 USgph	5 USgpm	1.0	2.5	3.0
3/8"	200 USgph	10 USgpm	1.0	2.5	3.0
1/2"	300 USgph	15 USgpm	1.0	3.0	3.5
Max Temperature: (°F)		Plastic: 140° ; Metal: 300°, (Peak Short Term 390°)			
Materials of Construction:					
Diaphragm		PTFE / EPDM, Optional: Viton & PTFE / Viton			
Valve Top		Standard: PVC (Threaded to Plastic Valves, Bolted to Metal Valves) Optional: CPVC, Steel, 316 SS, (Alloy tops fit alloy valves ONLY)			
Valve Body		PVC, CPVC, PP, PTFE, PVDF, 316 SS, A 20, Hast. C, Others on Request			

Performance Curves:



Dimensions:



Product Codes For Ordering:

PRT

	1	2	3
1 = Size			
025 - 1/4"			
038 - 3/8"			
050 - 1/2"			
2 = Material			
P - PVC			
CP - CPVC			
PP - Polypro			
T - PTFE			
K - PVDF			
S - 316 SS			
A - Alloy 20			
C - Hastalloy C			
3 = Options			
V - Viton Diaphragm			
2P - 2 Port Configuration			
90 - 90° Configuration			
OS - Optional Steel Top			
OSS - Optional 316 SS Top			
MS - 50 - 350 psi Valve, SteelTop			
MSS - 50 - 350 psi; 316 SS Top			
S - Socket Connections			

D	A	B	C
1/4"	3.90	2.375	0.75
3/8"	3.90	2.375	0.75
1/2"	4.60	2.375	1.10

Note: Options OS, OSS, MS, & MSS are only for use on 316SS, A20, & Hast C Valves.

For more detailed information visit us at www.griffcovalve.com