

<p><b>Order Code</b></p> <p style="text-align: center;"> <span style="margin-right: 20px;">Gear Set</span> <span>Drive Mount</span> </p> <p><b>Base Code</b></p> <table style="width: 100%; text-align: center; border-collapse: collapse;"> <tr> <td style="border: 1px solid black; width: 20px; height: 20px;">G</td> <td style="border: 1px solid black; width: 20px; height: 20px;">B</td> <td style="border: 1px solid black; width: 20px; height: 20px;"></td> <td style="border: 1px solid black; width: 20px; height: 20px;"></td> <td style="border: 1px solid black; width: 20px; height: 20px;"></td> <td style="border: 1px solid black; width: 20px; height: 20px;"></td> <td style="border: 1px solid black; width: 20px; height: 20px;"></td> <td style="border: 1px solid black; width: 20px; height: 20px;"></td> <td style="border: 1px solid black; width: 20px; height: 20px;"></td> </tr> <tr> <td>1</td> <td>2</td> <td>3</td> <td>4</td> <td>5</td> <td>6</td> <td>7</td> <td>8</td> <td></td> </tr> <tr> <td colspan="3">Model</td> <td colspan="3">Wetted Materials</td> <td colspan="3">Options</td> </tr> </table> <p style="text-align: right; font-size: small;">         O/C: Pump          S/K: Service Kit       </p>	G	B								1	2	3	4	5	6	7	8		Model			Wetted Materials			Options			<p><b>Pump Construction</b></p> <p>Magnetic Drive Gear Pump          Suction Shoe Style          Two or Three Helical Gears/DP25          Stationary Shafts          O-Ring Seal (Qty 1)</p>
G	B																											
1	2	3	4	5	6	7	8																					
Model			Wetted Materials			Options																						

**Base Code** Select a code character for each numbered position to configure the product.

1	Code	Product Type	Specifications	Notes	
	G	Gear Pump			
2	B	<b>Product Series</b>	<i>Max System Pressure (MAWP)</i> Series 200      21 Bar (300 psi)	<i>Ports</i> 1/8-27 (F) NPT Side Ports	
3	-	<b>Design Modifier</b>	Standard Design		
4		<b>Gear Set (Width/N°Gears/Pitch)</b>	<i>Displacement</i> P23 0.150/2/25      0.261 ml/rev (0.07 gal/1000*re P25 0.350/2/25      0.58 ml/rev (0.15 gal/1000*rev) P35 0.350/3/25      1.17 ml/rev (0.31 gal/1000*rev)	<i>Max Differential Pressure</i> 8.7 Bar (125 psi) 8.7 Bar (125 psi) 4.2 Bar (60 psi)	<i>Driven Magnet (Standard)</i> Ferrite Ferrite Ferrite
5		<b>Gear Material</b>		<i>Temp Range</i> P PPS (carbon fiber/ptfe)      5.2 Bar (75 psi)      -46/177°C (-50/350°F) J PEEK (carbon fiber/ptfe)      8.7 Bar (125 psi)      -46/177°C (-50/350°F) K PPSKV (aramid fiber)      5.2 Bar (75 psi)      -46/177°C (-50/350°F)	
6		<b>Static Seals</b>		<i>Temp Range</i> D EP      -46/149°C (-50/300°F) V Viton®      -29/204°C (-20/400°F) B Buna N      -29/121°C (-20/250°F) K Kalrez®      -29/260°C (-20/500°F)	
7		<b>Base Materials</b>			
	S	SS316			
	D	Alloy 20			
	T	Titanium			
	C	Hast C-276®			
	B	Hast B-2®			
8		<b>Drive Mount</b>	<i>Max System Pressure (MAWP)</i>	<i>Weight (Pumphead)</i>	
	A	MP Housing	21 Bar (300 psi)	0.34 kg (0.75 lbs)	
	G	MP Integral Series® (SS316)	21 Bar(300 psi) SS316	0.37 kg (0.82 lbs)      1	
	E	NEMA 56C	21 Bar (300 psi)	1.1 kg (2.4 lbs)      2	
	K	NEMA 143/145TC	21 Bar (300 psi)	1.1 kg (2.4 lbs)      2	
	2	IEC 56-B14	21 Bar (300 psi)	1.1 kg (2.4 lbs)      3	
	3	IEC 63-B5	21 Bar (300 psi)	1.1 kg (2.4 lbs)      2	
	4	IEC 63-B14	21 Bar (300 psi)	1.1 kg (2.4 lbs)      2	
	5	IEC 71-B5	21 Bar (300 psi)	1.1 kg (2.4 lbs)      2	
	6	IEC 71-B14	21 Bar (300 psi)	1.1 kg (2.4 lbs)      2	

ACTUAL PERFORMANCE MAY VARY - Specifications are subject to change without notice. When multiple specs are noted, the most conservative value applies.

USA: Micropump, Inc., A Unit of IDEX Corporation • Phone 360.253.2008 • Fax 360.253.2401

UK: Micropump, Ltd., A Subsidiary of Micropump, Inc. • Phone +44 (1480) 356900 • Fax +44 (1480) 356920


info@micropump.com

www.micropump.com

GB000S.2

Page 1 of 2

Printed 30-May-01

Order Code								Pump Construction	
Base Code		Gear Set		Drive Mount		Options		 <p>Magnetic Drive Gear Pump Suction Shoe Style Two or Three Helical Gears/DP25 Stationary Shafts O-Ring Seal (Qty 1)</p>	
G	B								
1	2	3	4	5	6	7	8		
Model		Wetted Materials				O/C: Pump S/K: Service Kit			

**Options** Add Option codes after the Base Code to modify features or enhance the product.

<b>Bypass (PC11)</b>		Optional Internal Bypass		
B1	Internal Bypass (SS316)	Preset to 3 Bar (pump only) (Pr		4
<b>Driven Magnet (PC12)</b>				
M1	SmCo Driven (Segments)			5
<b>Driving Magnet (PC13)</b>				
N1	SmCo Driving (Segments)			5
N3	NdFeB Driving (Ring)			5
<b>Ports/Fittings (PC17)</b>		Ports		
P4	1/4-18 NPT Ports	1/4-18 (F) NPT Side Ports		
F5	Tri-Clamp (TC25) Fittings	1/2" 316L SS Ferrule		

**Notes**

- 1 Integral Series® SS316 only. Consult factory for other materials.
- 2 "A" mount aluminum adapter, packaged separately. Includes magnet hub.
- 3 "A" mount plastic adapter, packaged separately. Includes magnet hub.
- 4 Available in SS316 only.
- 5 Application details required before order entry.

ACTUAL PERFORMANCE MAY VARY - Specifications are subject to change without notice. When multiple specs are noted, the most conservative value applies.

USA: Micropump, Inc., A Unit of IDEX Corporation • Phone 360.253.2008 • Fax 360.253.2401

UK: Micropump, Ltd., A Subsidiary of Micropump, Inc. • Phone +44 (1480) 356900 • Fax +44 (1480) 356920

info@micropump.com

www.micropump.com

GB000S.2

Page 2 of 2

Printed 30-May-01

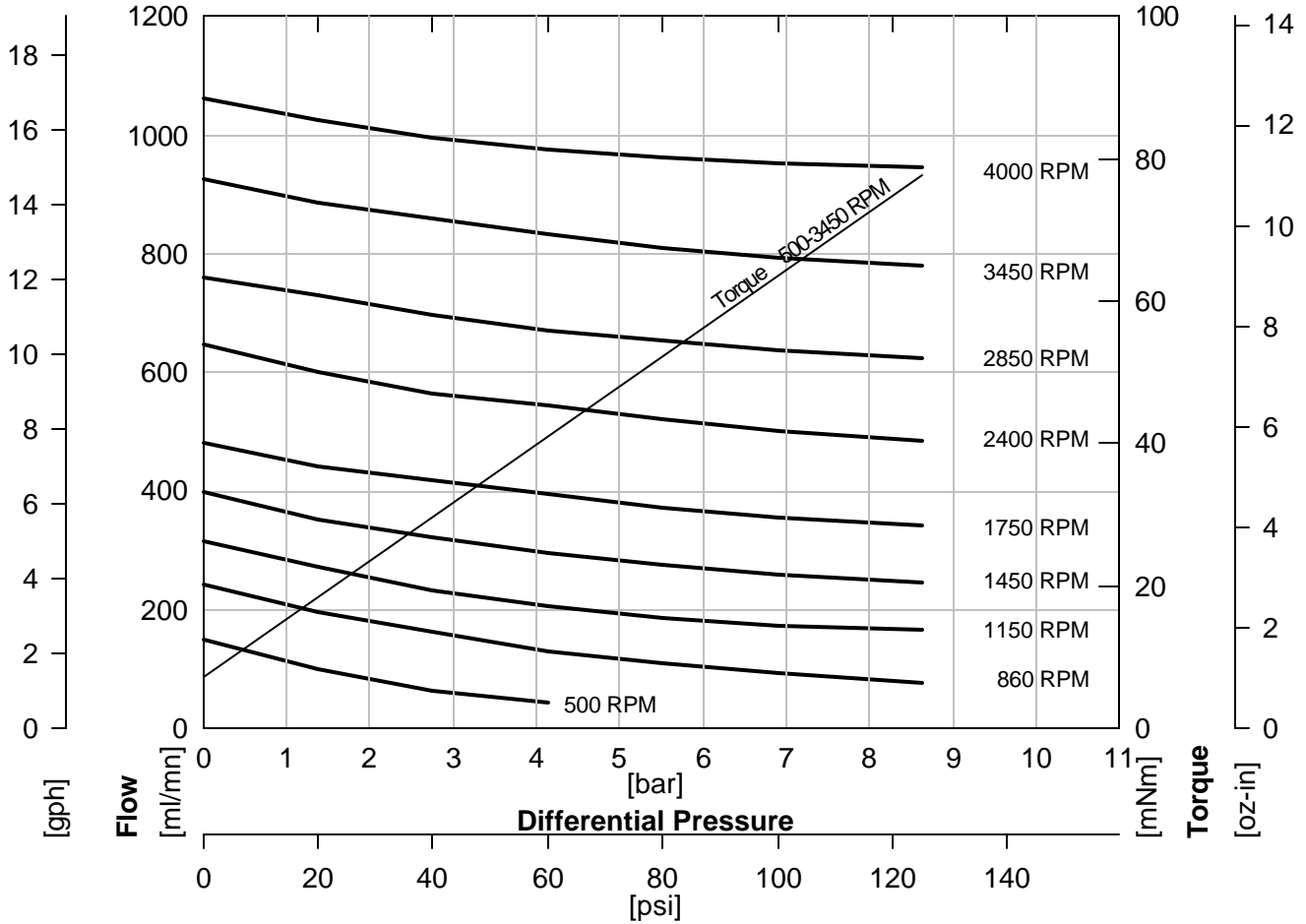
<b>Order Code</b>				<b>Pump Construction</b>			
<b>Base Code</b>		<b>Gear Set</b>		<b>Drive Mount</b>		<b>Options</b>	
<b>G</b>	<b>B</b>	-	<b>P23</b>				
1	2	3	4	5	6	7	8
Model			Wetted Materials			O/C: Pump S/K: Service Kit	
<b>Pump Construction</b> Magnetic Drive Gear Pump Suction Shoe Style Two or Three Helical Gears/DP25 Stationary Shafts O-Ring Seal (Qty 1)							



## Performance

GB-P23

Water @ 1 CP



ACTUAL PERFORMANCE MAY VARY - Specifications are subject to change without notice. When multiple specs are noted, the most conservative value applies.

USA: Micropump, Inc., A Unit of IDEX Corporation • Phone 360.253.2008 • Fax 360.253.2401

UK: Micropump, Ltd., A Subsidiary of Micropump, Inc. • Phone +44 (1480) 356900 • Fax +44 (1480) 356920

info@micropump.com

www.micropump.com

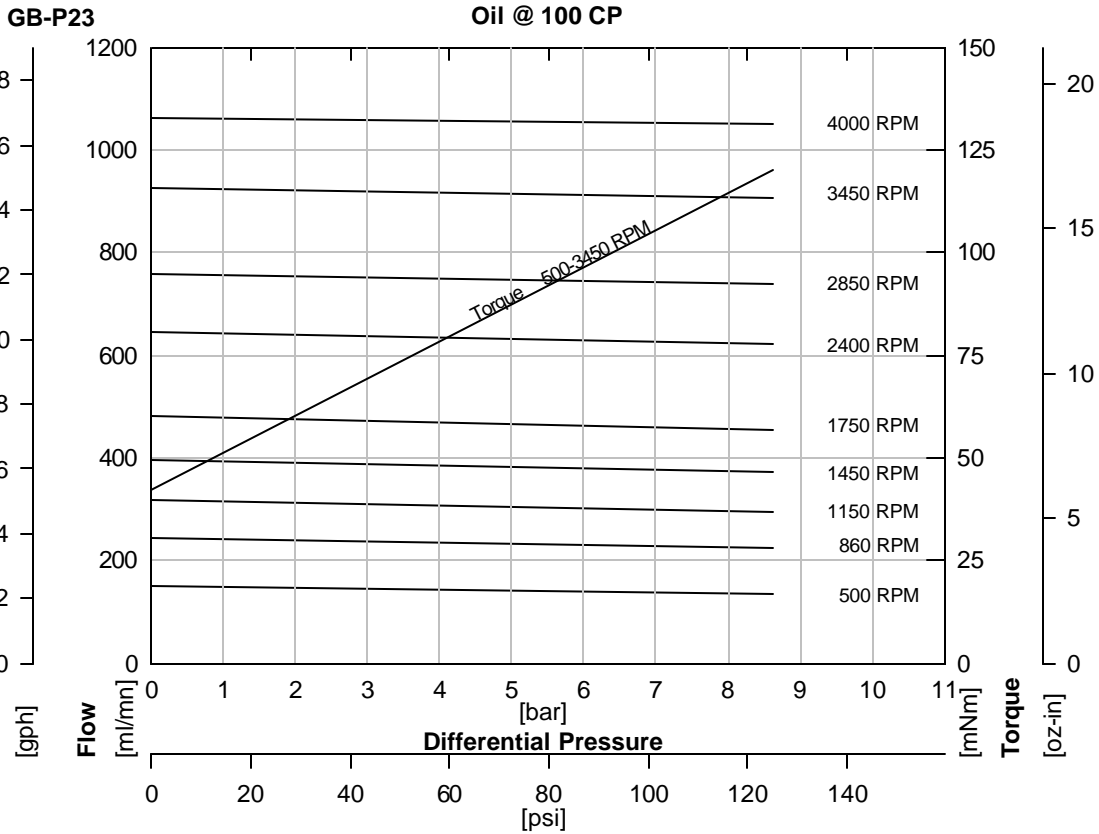
GB300 Rev A

Page 1

Printed 30-May-01

<b>Order Code</b>				<b>Pump Construction</b>				
<b>Base Code</b>		Gear Set	Drive Mount		<b>Options</b>			
G	B	-	P23					
1	2	3	4	5	6	7		
Model			Wetted Materials			O/C: Pump S/K: Service Kit		
Magnetic Drive Gear Pump Suction Shoe Style Two or Three Helical Gears/DP25 Stationary Shafts O-Ring Seal (Qty 1)								

## Performance-High Viscosity



$$\text{Watts} = \frac{\text{Torque [mNm]} \times \text{Speed [RPM]}}{9555}$$

$$\text{HP} = \frac{\text{Torque [oz-in]} \times \text{Speed [RPM]}}{1.008 \times 10^6}$$

To calculate torque, multiply correction factor by torque from viscosity curve above.

Torque Correction Factors: For Higher Viscosity Liquids				
Viscosity [cp]		1	100	1500
Max Speed [RPM]		3450	3450	1450
[Bar]	[psi]			
0.3	5	0.2	1	2.7
1.4	20	0.3	1	2.3
2.8	40	0.4	1	2.1
4.1	60	0.5	1	1.9
5.5	80	0.6	1	1.7
6.9	100	0.6	1	1.6
8.6	125	0.6	1	1.5

Magnet Decouple Torque			
Driven Magnet	Driving Hub	Torque [mNm]	Torque [oz.in]
Ferrite	Ferrite	155	22
Ferrite	SmCo	212	30
Ferrite	NdFeB	353	50
SmCo	Ferrite	254	36
SmCo	SmCo	565	80
SmCo	NdFeB	777	110

ACTUAL PERFORMANCE MAY VARY - Specifications are subject to change without notice. When multiple specs are noted, the most conservative value applies.

USA: Micropump, Inc., A Unit of IDEX Corporation • Phone 360.253.2008 • Fax 360.253.2401

UK: Micropump, Ltd., A Subsidiary of Micropump, Inc. • Phone +44 (1480) 356900 • Fax +44 (1480) 356920


info@micropump.com

www.micropump.com

GB300 Rev A

Page 2

Printed 30-May-01

<p><b>Order Code</b></p> <table style="width: 100%; border-collapse: collapse;"> <tr> <td style="width: 15%;"><b>Base Code</b></td> <td style="width: 15%; text-align: center;">Gear Set</td> <td style="width: 15%;"></td> <td style="width: 15%; text-align: center;">Drive Mount</td> <td style="width: 40%;"><b>Options</b></td> </tr> <tr> <td style="border: 1px solid black; text-align: center;">G</td> <td style="border: 1px solid black; text-align: center;">B</td> <td style="border: 1px solid black; text-align: center;">-</td> <td style="border: 1px solid black; text-align: center;">P23</td> <td style="border: 1px solid black;"></td> </tr> <tr> <td style="text-align: center;">1</td> <td style="text-align: center;">2</td> <td style="text-align: center;">3</td> <td style="text-align: center;">4</td> <td style="text-align: center;">5</td> </tr> <tr> <td colspan="3" style="text-align: center;">Model</td> <td colspan="2" style="text-align: center;">Wetted Materials</td> </tr> </table> <div style="border: 1px solid black; padding: 2px; width: fit-content; margin-top: 5px;">         O/C: Pump          S/K: Service Kit       </div>	<b>Base Code</b>	Gear Set		Drive Mount	<b>Options</b>	G	B	-	P23		1	2	3	4	5	Model			Wetted Materials		<p><b>Pump Construction</b></p> <ul style="list-style-type: none"> <li>Magnetic Drive Gear Pump</li> <li>Suction Shoe Style</li> <li>Two or Three Helical Gears/DP25</li> <li>Stationary Shafts</li> <li>O-Ring Seal (Qty 1)</li> </ul> 
<b>Base Code</b>	Gear Set		Drive Mount	<b>Options</b>																	
G	B	-	P23																		
1	2	3	4	5																	
Model			Wetted Materials																		

## Specification

	SI	US
Displacement	0.261 ml/rev	0.07 gal/1000*rev
Max Flow (4 Pole Speed)	380 ml/mn 1450 RPM (50Hz)	7.3 gal/hr 1750 RPM (60Hz)
Max Flow (2 Pole Speed)	750 ml/mn 2850 RPM (50Hz)	15 gal/hr 3450 RPM (60Hz)
Max Differential Pressure	1 8.7 Bar	125 psi
Max System Pressure (MAWP)	21 Bar	300 psi
NIPR (Absolute)	180 mBar	2.5 psia
Wet Lift (Typical)	2 51 cm.H <sub>2</sub> O (1450 RPM)	24 in.H <sub>2</sub> O (1750 RPM)
Temp Range	3 See Gear Material	See Gear Material
Viscosity Range	4 0.2 to 1500 cp	0.2 to 1500 cp
Max Speed	10,000 RPM	10,000 RPM
Rotation (Facing Motor Shaft)	CW	CW
Weight (Pumphead)	0.34 kg	0.75 lbs
Dimensions (LxWxH)	See Drawing	See Drawing
Ports	1/8-27 (F) NPT Side Ports	1/8-27 (F) NPT Side Ports
Driven Magnet (Standard)	Ferrite	Ferrite
Optional Internal Bypass	Preset to 3 Bar (pump only)	Preset to 45 psi (pump only)

**Notes**

- 1 See Product Options. Max pressure depends on gear material.
- 2 Priming ability varies with operating conditions.
- 3 See Product Options for specific temp limits.
- 4 See Performance-High Viscosity for viscosity limits.

ACTUAL PERFORMANCE MAY VARY - Specifications are subject to change without notice. When multiple specs are noted, the most conservative value applies.

USA: Micropump, Inc., A Unit of IDEX Corporation • Phone 360.253.2008 • Fax 360.253.2401

UK: Micropump, Ltd., A Subsidiary of Micropump, Inc. • Phone +44 (1480) 356900 • Fax +44 (1480) 356920

info@micropump.com


www.micropump.com

GB300 Rev A

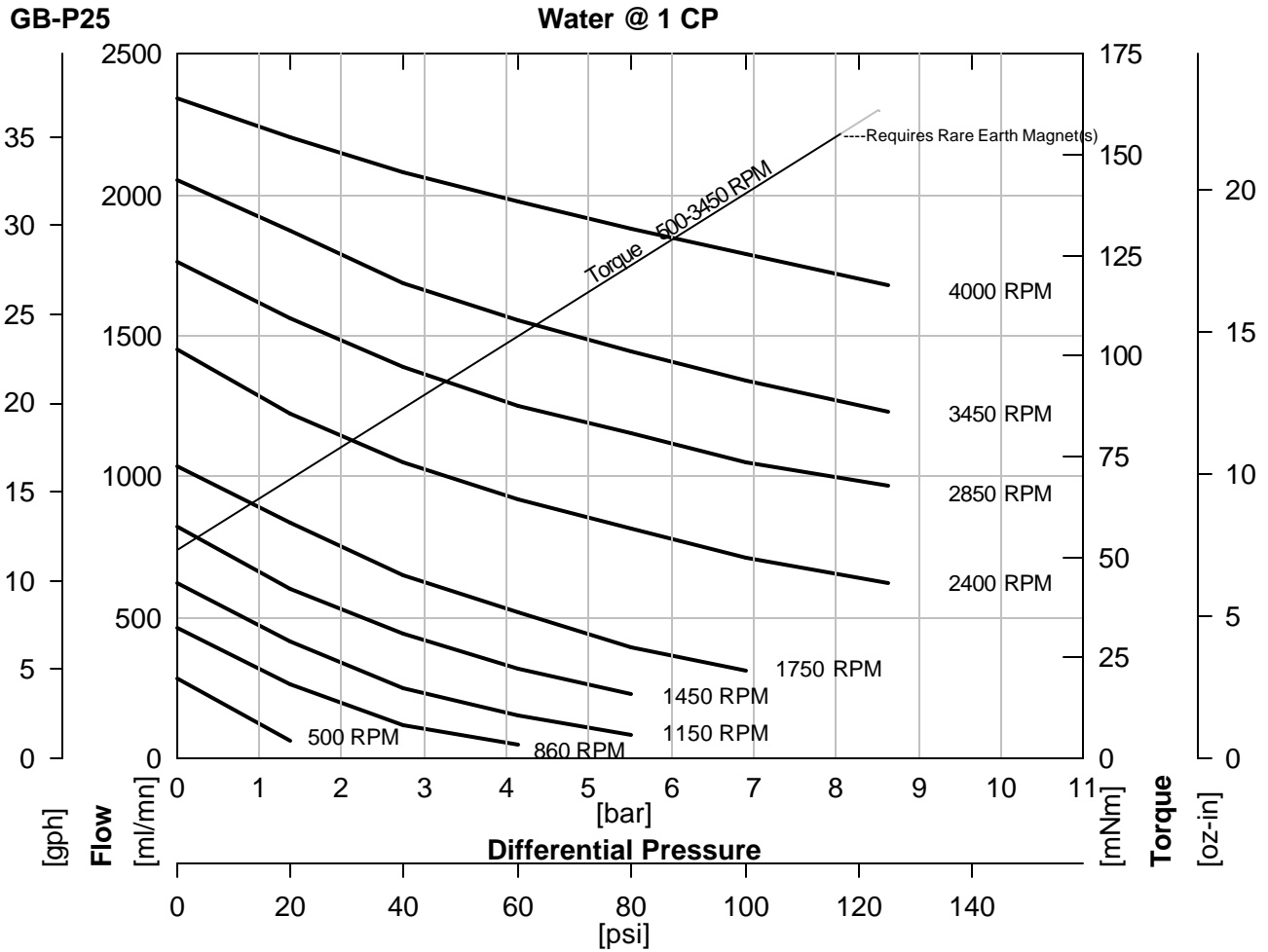
Page 3

Printed 30-May-01



<b>Order Code</b>				<b>Pump Construction</b>			
<b>Base Code</b>		Gear Set		Drive Mount		<b>Options</b>	
<b>G</b>	<b>B</b>	-	<b>P25</b>				
1	2	3	4	5	6	7	8
Model			Wetted Materials			O/C: Pump S/K: Service Kit	
<p>Magnetic Drive Gear Pump Suction Shoe Style Two or Three Helical Gears/DP25 Stationary Shafts O-Ring Seal (Qty 1)</p> 							

## Performance



ACTUAL PERFORMANCE MAY VARY - Specifications are subject to change without notice. When multiple specs are noted, the most conservative value applies.

USA: Micropump, Inc., A Unit of IDEX Corporation • Phone 360.253.2008 • Fax 360.253.2401

UK: Micropump, Ltd., A Subsidiary of Micropump, Inc. • Phone +44 (1480) 356900 • Fax +44 (1480) 356920

info@micropump.com

www.micropump.com

GB500 Rev A

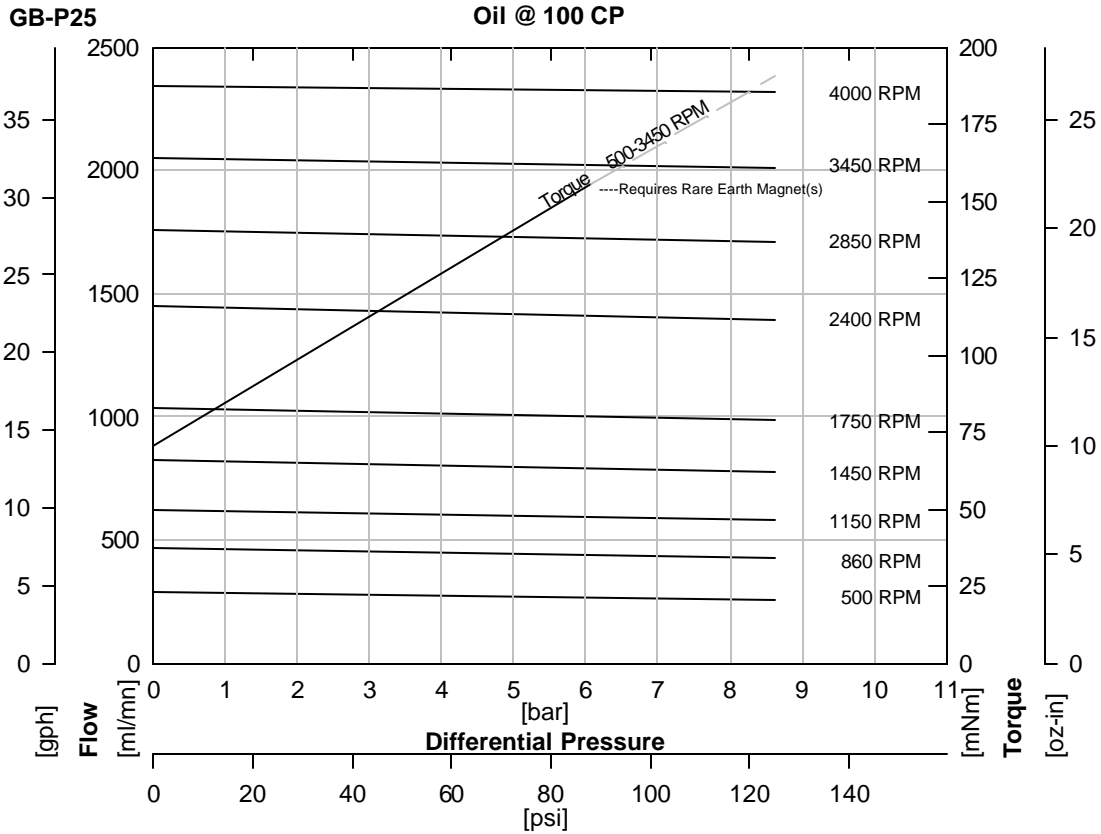
Page 1

Printed 30-May-01

<b>Order Code</b>				<b>Pump Construction</b>			
<b>Base Code</b>		Gear Set		Drive Mount		<b>Options</b>	
G	B	-	P25	5	6	7	8
1 Model		4		5 Wetted Materials		O/C: Pump S/K: Service Kit	
Magnetic Drive Gear Pump Suction Shoe Style Two or Three Helical Gears/DP25 Stationary Shafts O-Ring Seal (Qty 1)							



## Performance-High Viscosity



$$\text{Watts} = \frac{\text{Torque [mNm]} \times \text{Speed [RPM]}}{9555}$$

$$\text{HP} = \frac{\text{Torque [oz-in]} \times \text{Speed [RPM]}}{1.008 \times 10^6}$$

To calculate torque, multiply correction factor by torque from viscosity curve above.

Torque Correction Factors: For Higher Viscosity Liquids				
Viscosity [cp]		1	100	1500
Max Speed [RPM]		3450	3450	1150
[Bar]	[psi]			
0.3	5	0.7	1	2.1
1.4	20	0.8	1	1.9
2.8	40	0.8	1	1.7
4.1	60	0.8	1	1.9
5.5	80	0.8	1	1.4
6.9	100	0.8	1	1.3
8.6	125	0.9	1	1.3

Magnet Decouple Torque			
Driven Magnet	Driving Hub	Torque [mNm]	Torque [oz.in]
Ferrite	Ferrite	155	22
Ferrite	SmCo	212	30
Ferrite	NdFeB	353	50
SmCo	Ferrite	254	36
SmCo	SmCo	565	80
SmCo	NdFeB	777	110

ACTUAL PERFORMANCE MAY VARY - Specifications are subject to change without notice. When multiple specs are noted, the most conservative value applies.

USA: Micropump, Inc., A Unit of IDEX Corporation • Phone 360.253.2008 • Fax 360.253.2401

UK: Micropump, Ltd., A Subsidiary of Micropump, Inc. • Phone +44 (1480) 356900 • Fax +44 (1480) 356920

info@micropump.com

www.micropump.com

GB500 Rev A

Page 2

Printed 30-May-01

<p><b>Order Code</b></p> <table style="width: 100%; border-collapse: collapse;"> <tr> <td style="width: 15%;"><b>Base Code</b></td> <td style="width: 15%; text-align: center;">Gear Set</td> <td style="width: 15%;"></td> <td style="width: 15%; text-align: center;">Drive Mount</td> <td style="width: 15%;"><b>Options</b></td> </tr> <tr> <td style="border: 1px solid black; text-align: center;">G</td> <td style="border: 1px solid black; text-align: center;">B</td> <td style="border: 1px solid black; text-align: center;">-</td> <td style="border: 1px solid black; text-align: center;">P25</td> <td style="border: 1px solid black;"></td> </tr> <tr> <td style="text-align: center;">1</td> <td style="text-align: center;">2</td> <td style="text-align: center;">3</td> <td style="text-align: center;">4</td> <td style="text-align: center;">5</td> </tr> <tr> <td colspan="3" style="text-align: center;">Model</td> <td colspan="2" style="text-align: center;">Wetted Materials</td> </tr> </table> <div style="border: 1px solid black; padding: 2px; margin-top: 5px;">         O/C: Pump          S/K: Service Kit       </div>	<b>Base Code</b>	Gear Set		Drive Mount	<b>Options</b>	G	B	-	P25		1	2	3	4	5	Model			Wetted Materials		<p><b>Pump Construction</b></p> <ul style="list-style-type: none"> <li>Magnetic Drive Gear Pump</li> <li>Suction Shoe Style</li> <li>Two or Three Helical Gears/DP25</li> <li>Stationary Shafts</li> <li>O-Ring Seal (Qty 1)</li> </ul>
<b>Base Code</b>	Gear Set		Drive Mount	<b>Options</b>																	
G	B	-	P25																		
1	2	3	4	5																	
Model			Wetted Materials																		

## Specification

	SI	US
Displacement	0.58 ml/rev	0.15 gal/1000*rev
Max Flow (4 Pole Speed)	850 ml/mn 1450 RPM (50Hz)	17 gal/hr 1750 RPM (60Hz)
Max Flow (2 Pole Speed)	1660 ml/mn 2850 RPM (50Hz)	32 gal/hr 3450 RPM (60Hz)
Max Differential Pressure	1 8.7 Bar	125 psi
Max System Pressure (MAWP)	21 Bar	300 psi
NIPR (Absolute)	180 mBar	2.5 psia
Wet Lift (Typical)	2 51 cm.H2O (1450 RPM)	24 in.H2O (1750 RPM)
Temp Range	3 See Gear Material	See Gear Material
Viscosity Range	4 0.2 to 1500 cp	0.2 to 1500 cp
Max Speed	10,000 RPM	10,000 RPM
Rotation (Facing Motor Shaft)	CW	CW
Weight (Pumphead)	0.34 kg	0.75 lbs
Dimensions (LxWxH)	See Drawing	See Drawing
Ports	1/8-27 (F) NPT Side Ports	1/8-27 (F) NPT Side Ports
Driven Magnet (Standard)	Ferrite	Ferrite
Optional Internal Bypass	Preset to 3 Bar (pump only)	Preset to 45 psi (pump only)

**Notes**

- 1 See Product Options. Max pressure depends on gear material.
- 2 Priming ability varies with operating conditions.
- 3 See Product Options for specific temp limits.
- 4 See Performance-High Viscosity for viscosity limits.

ACTUAL PERFORMANCE MAY VARY - Specifications are subject to change without notice. When multiple specs are noted, the most conservative value applies.

USA: Micropump, Inc., A Unit of IDEX Corporation • Phone 360.253.2008 • Fax 360.253.2401

UK: Micropump, Ltd., A Subsidiary of Micropump, Inc. • Phone +44 (1480) 356900 • Fax +44 (1480) 356920

info@micropump.com

www.micropump.com

GB500 Rev A

Page 3

Printed 30-May-01





# Technical Data

# Series 200

<b>Order Code</b>		Gear Set		Drive Mount		Options	
<b>Base Code</b>							
<b>G</b>	<b>B</b>	-	<b>P35</b>				
1	2	3	4	5	6	7	8
Model			Wetted Materials			O/C: Pump S/K: Service Kit	

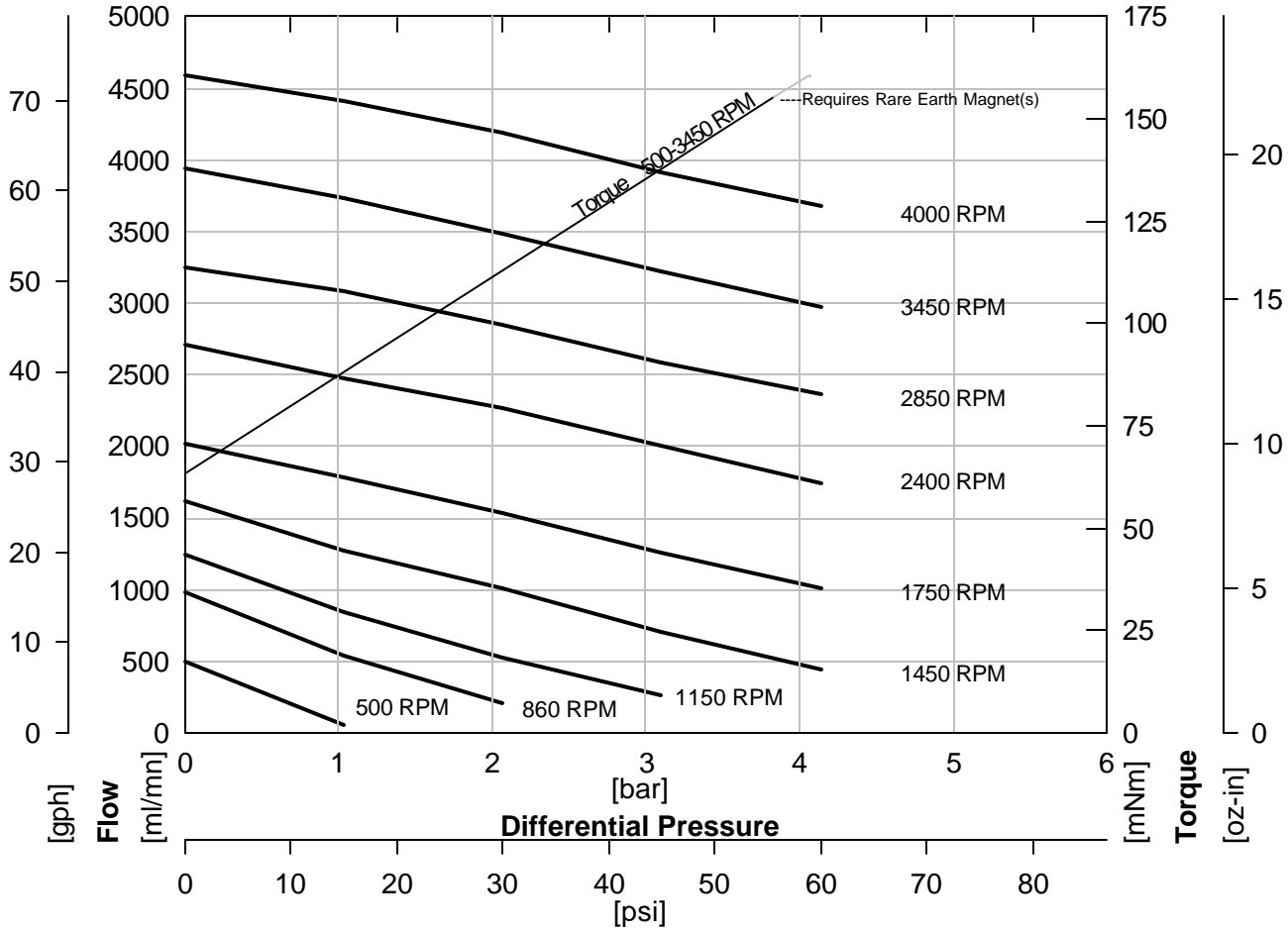
**Pump Construction**  
 Magnetic Drive Gear Pump  
 Suction Shoe Style  
 Two or Three Helical Gears/DP25  
 Stationary Shafts  
 O-Ring Seal (Qty 1)



## Performance

GB-P35

Water @ 1 CP



ACTUAL PERFORMANCE MAY VARY - Specifications are subject to change without notice. When multiple specs are noted, the most conservative value applies.

USA: Micropump, Inc., A Unit of IDEX Corporation • Phone 360.253.2008 • Fax 360.253.2401

UK: Micropump, Ltd., A Subsidiary of Micropump, Inc. • Phone +44 (1480) 356900 • Fax +44 (1480) 356920

info@micropump.com

www.micropump.com

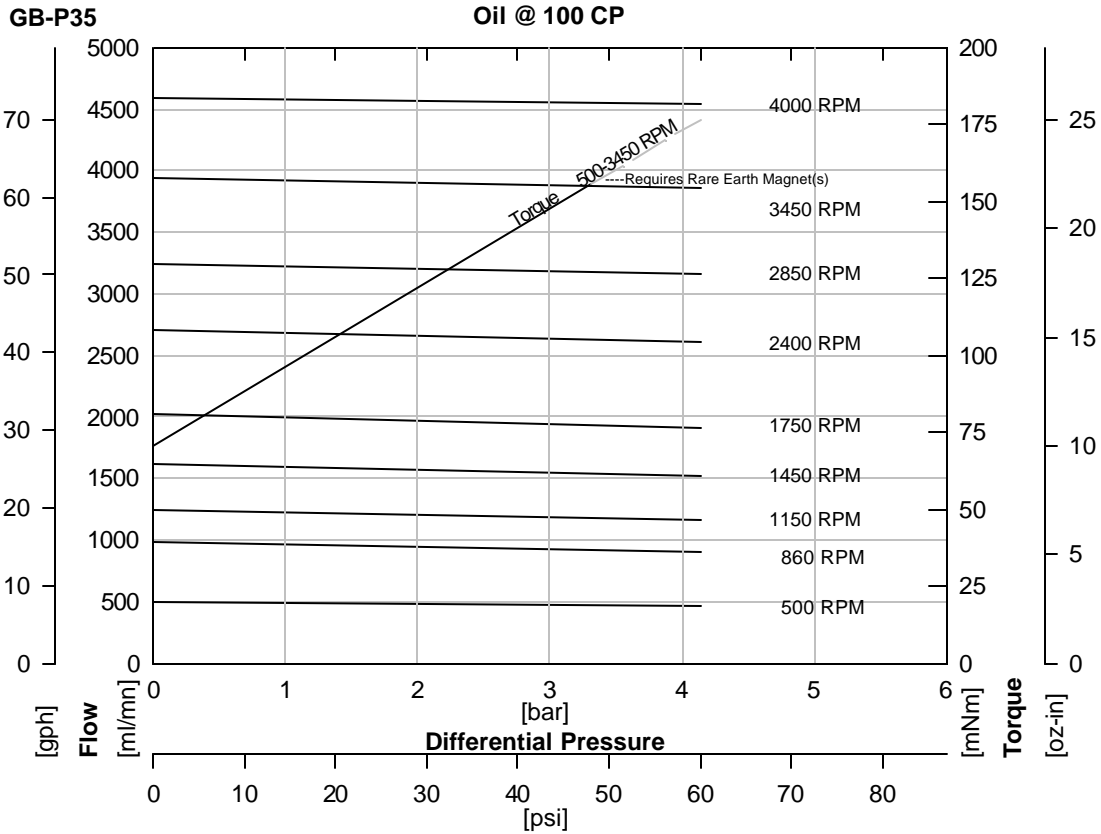
GB700 Rev A

Page 1

Printed 30-May-01

<b>Order Code</b>				<b>Pump Construction</b>			
<b>Base Code</b>		Gear Set	Drive Mount		<b>Options</b>		
G	B	-	P35				
1	2	3	4	5	6	7	
Model			Wetted Materials			O/C: Pump S/K: Service Kit	
Magnetic Drive Gear Pump Suction Shoe Style Two or Three Helical Gears/DP25 Stationary Shafts O-Ring Seal (Qty 1)							

## Performance-High Viscosity



$$\text{Watts} = \frac{\text{Torque [mNm]} \times \text{Speed [RPM]}}{9555}$$

$$\text{HP} = \frac{\text{Torque [oz-in]} \times \text{Speed [RPM]}}{1.008 \times 10^6}$$

To calculate torque, multiply correction factor by torque from viscosity curve above.

Torque Correction Factors: For Higher Viscosity Liquids				
Viscosity [cp]		1	100	1500
Max Speed [RPM]		3450	3450	300
[Bar]	[psi]			
0.3	5	0.9	1	1.2
1.4	20	0.9	1	1.2
2.8	40	0.9	1	1.1
4.1	60	0.9	1	1.1

Magnet Decouple Torque			
Driven Magnet	Driving Hub	Torque [mNm]	Torque [oz-in]
Ferrite	Ferrite	155	22
Ferrite	SmCo	212	30
Ferrite	NdFeB	353	50
SmCo	Ferrite	254	36
SmCo	SmCo	565	80
SmCo	NdFeB	777	110

ACTUAL PERFORMANCE MAY VARY - Specifications are subject to change without notice. When multiple specs are noted, the most conservative value applies.

USA: Micropump, Inc., A Unit of IDEX Corporation • Phone 360.253.2008 • Fax 360.253.2401

UK: Micropump, Ltd., A Subsidiary of Micropump, Inc. • Phone +44 (1480) 356900 • Fax +44 (1480) 356920

info@micropump.com

www.micropump.com

GB700 Rev A

Page 2

Printed 30-May-01

<p><b>Order Code</b></p> <table style="width: 100%; border-collapse: collapse;"> <tr> <td style="width: 15%;"><b>Base Code</b></td> <td style="width: 15%; text-align: center;">Gear Set</td> <td style="width: 15%;"></td> <td style="width: 15%; text-align: center;">Drive Mount</td> <td style="width: 15%;"><b>Options</b></td> </tr> <tr> <td style="border: 1px solid black; text-align: center;">G</td> <td style="border: 1px solid black; text-align: center;">B</td> <td style="border: 1px solid black; text-align: center;">-</td> <td style="border: 1px solid black; text-align: center;">P35</td> <td style="border: 1px solid black;"></td> </tr> <tr> <td style="text-align: center;">1</td> <td style="text-align: center;">2</td> <td style="text-align: center;">3</td> <td style="text-align: center;">4</td> <td style="text-align: center;">5</td> </tr> <tr> <td colspan="3" style="text-align: center;">Model</td> <td colspan="2" style="text-align: center;">Wetted Materials</td> </tr> </table> <div style="border: 1px solid black; padding: 2px; width: fit-content; margin-top: 5px;">         O/C: Pump          S/K: Service Kit       </div>	<b>Base Code</b>	Gear Set		Drive Mount	<b>Options</b>	G	B	-	P35		1	2	3	4	5	Model			Wetted Materials		<p><b>Pump Construction</b></p> <ul style="list-style-type: none"> <li>Magnetic Drive Gear Pump</li> <li>Suction Shoe Style</li> <li>Two or Three Helical Gears/DP25</li> <li>Stationary Shafts</li> <li>O-Ring Seal (Qty 1)</li> </ul>
<b>Base Code</b>	Gear Set		Drive Mount	<b>Options</b>																	
G	B	-	P35																		
1	2	3	4	5																	
Model			Wetted Materials																		

## Specification

	SI	US
Displacement	1.17 ml/rev	0.31 gal/1000*rev
Max Flow (4 Pole Speed)	1700 ml/mn 1450 RPM (50Hz)	33 gal/hr 1750 RPM (60Hz)
Max Flow (2 Pole Speed)	3340 ml/mn 2850 RPM (50Hz)	1.1 gal/mn 3450 RPM (60Hz)
Max Differential Pressure	1 4.2 Bar	60 psi
Max System Pressure (MAWP)	21 Bar	300 psi
NIPR (Absolute)	180 mBar	2.5 psia
Wet Lift (Typical)	2 51 cm.H <sub>2</sub> O (1450 RPM)	24 in.H <sub>2</sub> O (1750 RPM)
Temp Range	3 See Gear Material	See Gear Material
Viscosity Range	4 0.2 to 1500 cp	0.2 to 1500 cp
Max Speed	10,000 RPM	10,000 RPM
Rotation (Facing Motor Shaft)	CW	CW
Weight (Pumphead)	0.34 kg	0.75 lbs
Dimensions (LxWxH)	See Drawing	See Drawing
Ports	1/8-27 (F) NPT Side Ports	1/8-27 (F) NPT Side Ports
Driven Magnet (Standard)	Ferrite	Ferrite
Optional Internal Bypass	Preset to 3 Bar (pump only)	Preset to 45 psi (pump only)

**Notes**

- 1 See Product Options. Max pressure depends on gear material.
- 2 Priming ability varies with operating conditions.
- 3 See Product Options for specific temp limits.
- 4 See Performance-High Viscosity for viscosity limits.

ACTUAL PERFORMANCE MAY VARY - Specifications are subject to change without notice. When multiple specs are noted, the most conservative value applies.

USA: Micropump, Inc., A Unit of IDEX Corporation • Phone 360.253.2008 • Fax 360.253.2401

UK: Micropump, Ltd., A Subsidiary of Micropump, Inc. • Phone +44 (1480) 356900 • Fax +44 (1480) 356920

info@micropump.com

www.micropump.com

GB700 Rev A

Page 3

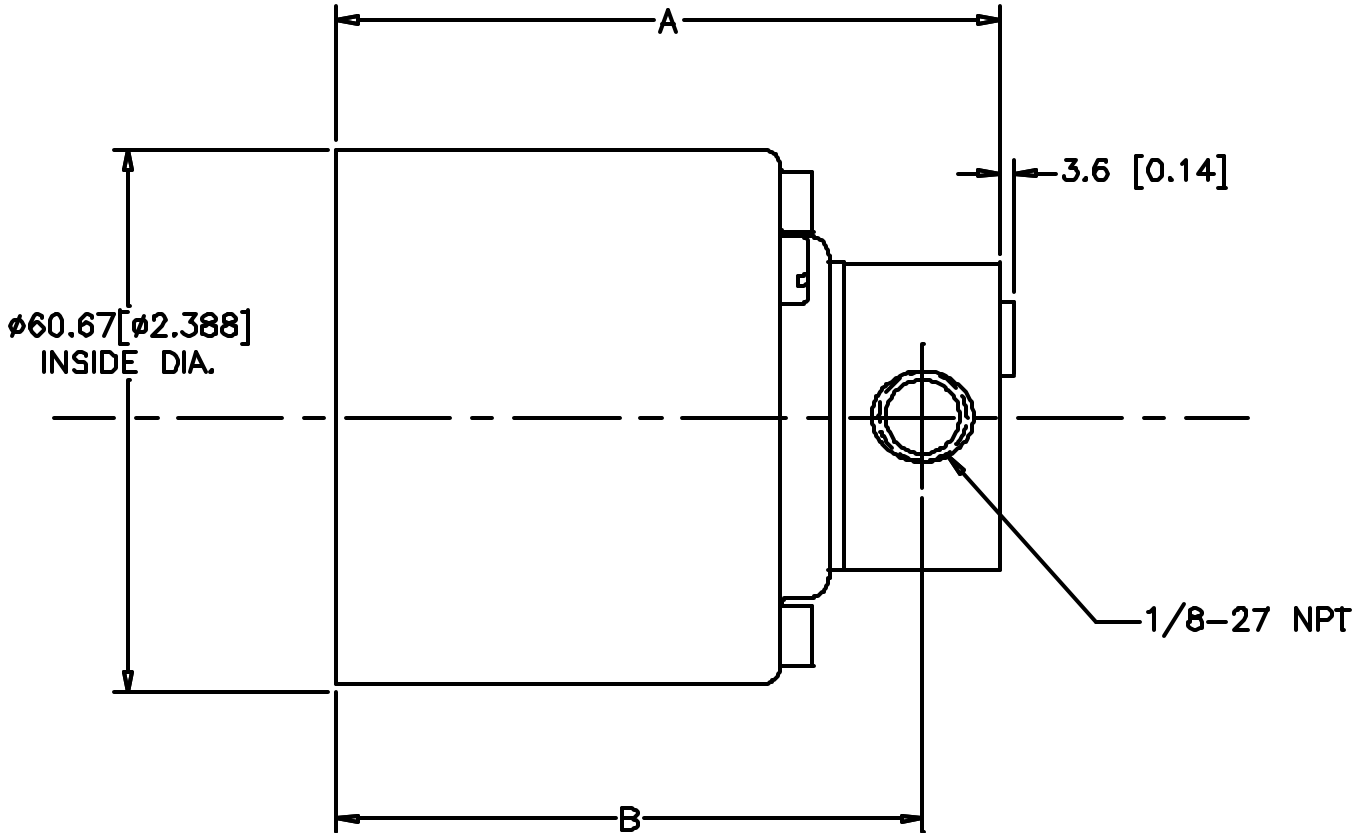
Printed 30-May-01



<b>Order Code</b>								<b>Pump Construction</b>	
<b>Base Code</b>		Gear Set			Drive Mount			<b>Options</b>	
<b>G</b>	<b>B</b>	-	<b>P23</b>				<b>A</b>		Magnetic Drive Gear Pump Suction Shoe Style Two or Three Helical Gears/DP25 Stationary Shafts O-Ring Seal (Qty 1)
1	2	3	4	5	6	7	8		
Model			Wetted Materials			O/C: Pump S/K: Service Kit			



## Dimension



A (MAX) mm [in]	B mm [in]
77.0 [3.03]	68.1 [2.68]

### NOTES:

1. ALL DIMENSIONS ARE NOMINAL.


ACTUAL PERFORMANCE MAY VARY - Specifications are subject to change without notice. When multiple specs are noted, the most conservative value applies.

USA: Micropump, Inc., A Unit of IDEX Corporation • Phone 360.253.2008 • Fax 360.253.2401

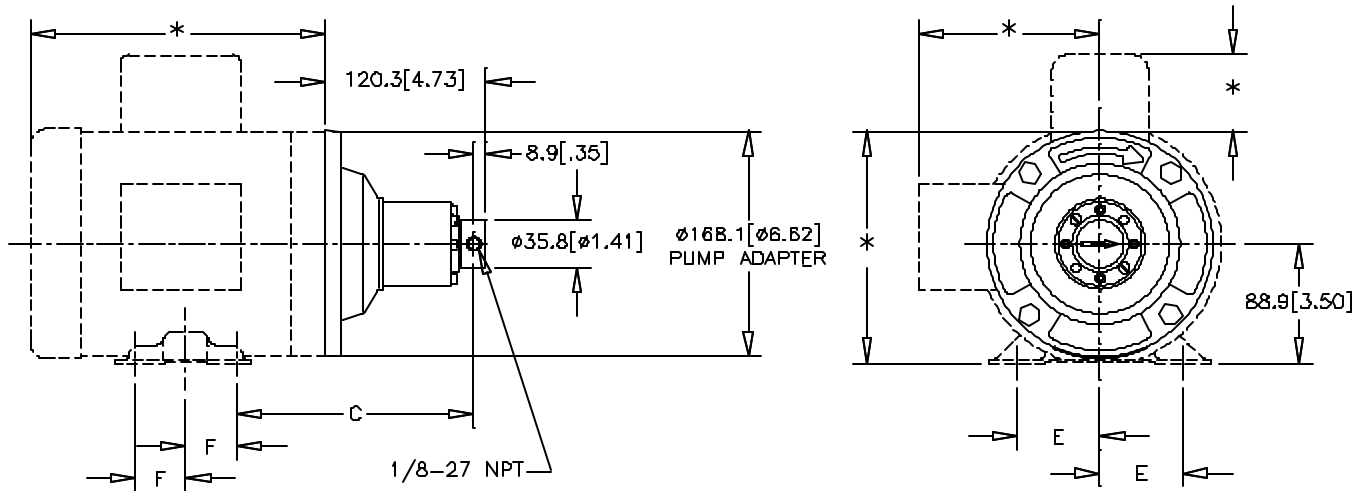
UK: Micropump, Ltd., A Subsidiary of Micropump, Inc. • Phone +44 (1480) 356900 • Fax +44 (1480) 356920

info@micropump.com

www.micropump.com

<b>Order Code</b>								<b>Pump Construction</b>	
<b>Base Code</b>		Gear Set		Drive Mount		<b>Options</b>			
<b>G</b>	<b>B</b>	-	<b>P23</b>			<b>E</b>			
1	2	3	4	5	6	7	8		
Model			Wetted Materials			O/C: Pump S/K: Service Kit		Magnetic Drive Gear Pump Suction Shoe Style Two or Three Helical Gears/DP25 Stationary Shafts O-Ring Seal (Qty 1)	

## Dimension



MOUNT	C mm [in]	E mm [in]	F mm [in]
NEMA 56C <sup>E</sup>	176.7 [6.95]	61.9 [2.44]	38.1 [1.50]
NEMA 143TC <sup>K</sup>	171.8 [6.77]	69.9 [2.75]	50.8 [2.00]
NEMA 145TC <sup>K</sup>	171.8 [6.77]	69.9 [2.75]	63.5 [2.50]

### NOTES:

- \*THESE DIMENSIONS WILL VARY BASED ON MOTOR SELECTION.
- ALL DIMENSIONS ARE NOMINAL.


ACTUAL PERFORMANCE MAY VARY - Specifications are subject to change without notice. When multiple specs are noted, the most conservative value applies.

USA: Micropump, Inc., A Unit of IDEX Corporation • Phone 360.253.2008 • Fax 360.253.2401

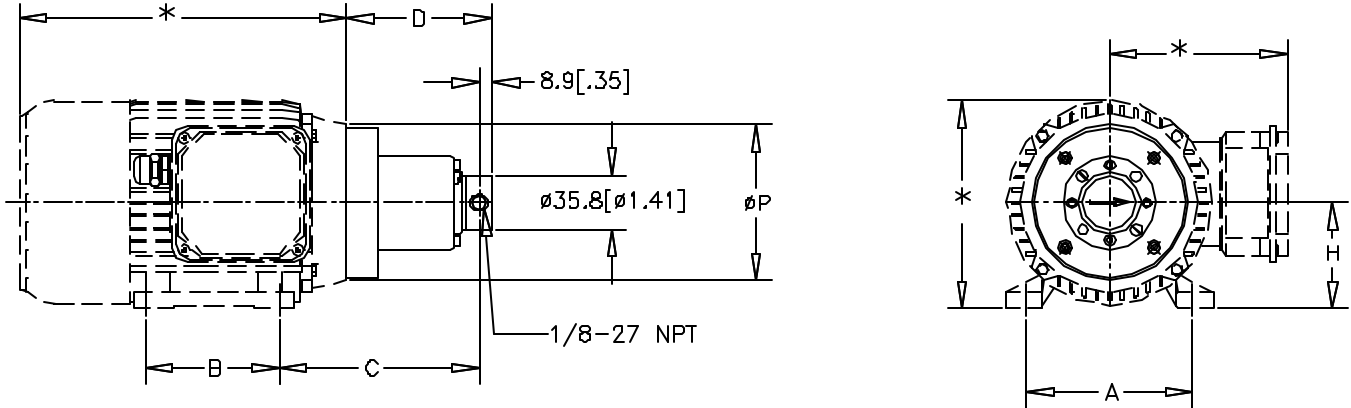
UK: Micropump, Ltd., A Subsidiary of Micropump, Inc. • Phone +44 (1480) 356900 • Fax +44 (1480) 356920

info@micropump.com

www.micropump.com

<b>Order Code</b>								<b>Pump Construction</b>	
<b>Base Code</b>		Gear Set		Drive Mount		<b>Options</b>		 <p>Magnetic Drive Gear Pump Suction Shoe Style Two or Three Helical Gears/DP25 Stationary Shafts O-Ring Seal (Qty 1)</p>	
<b>G</b>	<b>B</b>	-	<b>P23</b>			<b>2</b>			
1	2	3	4	5	6	7	8		
Model			Wetted Materials			O/C: Pump S/K: Service Kit			

## Dimension



MOUNT	A mm [in]	B mm [in]	C mm [in]	D mm [in]	H mm [in]	P mm [in]
2 IEC56B14B3	90 [3.54]	71 [2.80]	112.4 [4.43]	85.3 [3.36]	56 [2.20]	80 [3.15]
4 IEC63B14B3	100 [3.94]	80 [3.15]	122.0 [4.80]	90.9 [3.58]	63 [2.48]	90 [3.54]
6 IEC71B14B3	112 [4.41]	90 [3.54]	134.1 [5.28]	97.9 [3.86]	71 [2.80]	105 [4.13]

### NOTES:

- \*THESE DIMENSIONS WILL VARY BASED ON MOTOR SELECTION.
- ALL DIMENSIONS ARE NOMINAL.

ACTUAL PERFORMANCE MAY VARY - Specifications are subject to change without notice. When multiple specs are noted, the most conservative value applies.

USA: Micropump, Inc., A Unit of IDEX Corporation • Phone 360.253.2008 • Fax 360.253.2401

UK: Micropump, Ltd., A Subsidiary of Micropump, Inc. • Phone +44 (1480) 356900 • Fax +44 (1480) 356920

info@micropump.com

www.micropump.com

GB303 Rev A

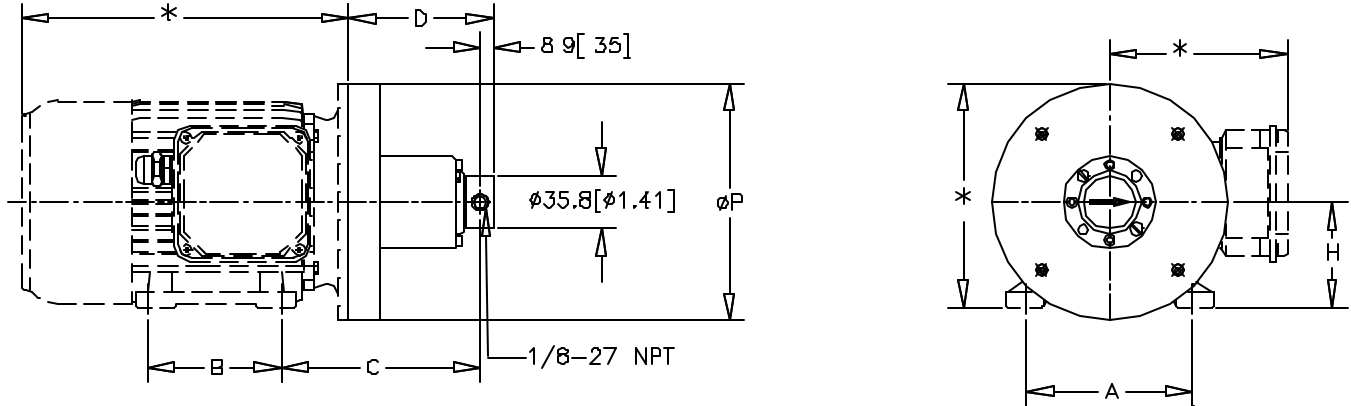
Dimensions 1

Printed 30-May-01

<b>Order Code</b>								<b>Pump Construction</b>	
<b>Base Code</b>		Gear Set			Drive Mount			<b>Options</b>	
<b>G</b>	<b>B</b>	-	<b>P21</b>				<b>3</b>		
1	2	3	4	5	6	7	8	O/C: Pump S/K: Service Kit	
Model			Wetted Materials						
								Magnetic Drive Gear Pump Suction Shoe Style Two or Three Helical Gears/DP25 Stationary Shafts O-Ring Seal (Qty 1)	



## Dimension



MOUNT	A mm [in]	B mm [in]	C mm [in]	D mm [in]	H mm [in]	P mm [in]
<sup>3</sup> IEC63B5B3	100 [3.94]	80 [3.15]	122.0 [4.80]	90.9 [3.58]	63 [2.48]	140 [5.51]
<sup>5</sup> IEC71B5B3	112 [4.41]	90 [3.54]	134.1 [5.28]	97.9 [3.86]	71 [2.80]	160 [6.30]

### NOTES:

- \*THESE DIMENSIONS WILL VARY BASED ON MOTOR SELECTION.
- ALL DIMENSIONS ARE NOMINAL.

ACTUAL PERFORMANCE MAY VARY - Specifications are subject to change without notice. When multiple specs are noted, the most conservative value applies.

USA: Micropump, Inc., A Unit of IDEX Corporation • Phone 360.253.2008 • Fax 360.253.2401

UK: Micropump, Ltd., A Subsidiary of Micropump, Inc. • Phone +44 (1480) 356900 • Fax +44 (1480) 356920

info@micropump.com

www.micropump.com

GB104 Rev A

Dimensions 1

Printed 30-May-01