

<p><b>Order Code</b></p> <p style="text-align: center;"> <span style="margin-right: 20px;">Gear Set</span> <span>Drive Mount</span> </p> <table border="1" style="width: 100%; border-collapse: collapse; text-align: center;"> <tr> <td style="width: 10%;"><b>Base Code</b></td> <td style="width: 10%;"><b>G</b></td> <td style="width: 10%;"><b>K</b></td> <td style="width: 10%;"></td> <td style="width: 10%;"></td> <td style="width: 10%;"></td> <td style="width: 10%;"></td> <td style="width: 10%;"></td> <td style="width: 10%;"></td> <td style="width: 10%;"></td> <td style="width: 10%;"></td> </tr> <tr> <td></td> <td>1</td> <td>2</td> <td>3</td> <td>4</td> <td>5</td> <td>6</td> <td>7</td> <td>8</td> <td colspan="3"></td> </tr> <tr> <td></td> <td colspan="3">Model</td> <td colspan="3">Wetted Materials</td> <td colspan="3"></td> <td colspan="1">                 O/C: Pump                  S/K: Service Kit             </td> </tr> </table>	<b>Base Code</b>	<b>G</b>	<b>K</b>										1	2	3	4	5	6	7	8					Model			Wetted Materials						O/C: Pump S/K: Service Kit	<p><b>Pump Construction</b></p> <p>Magnetic Drive Gear Pump                  Cavity Style                  Two Helical, Shafted Gears/DP16                  Sleeve Bushings                  O-Ring Seals (Qty 3)</p>
<b>Base Code</b>	<b>G</b>	<b>K</b>																																	
	1	2	3	4	5	6	7	8																											
	Model			Wetted Materials						O/C: Pump S/K: Service Kit																									

**Base Code** Select a code character for each numbered position to configure the product.

1	Code	Product Type	Specifications	Notes
	G	Gear Pump		
2	K	<b>Product Series</b>	<i>Max System Pressure (MAWP)</i> See Drive Mount	<i>Ports</i> 1/4-18 (F) NPT Side Ports
3	-	<b>Design Modifier</b>		
		Standard Design		
4	K23	<b>Gear Set (Width/N°Gears/Pitch)</b>	<i>Displacement</i> 0.850/2/16 3.15 ml/rev (0.83 gal/1000*rev)	<i>Max Differential Pressure</i> 4.2 Bar (60 psi)
				<i>Driven Magnet (Standard)</i> Ferrite
5	F	<b>Gear Material</b>	<i>Max Differential Pressure</i> PTFE 3.5 Bar (50 psi)	<i>Temp Range</i> -46/54°C (-50/130°F)
6	F V	<b>Static Seals</b>		<i>Temp Range</i> PTFE: -46/232°C (-50/450°F) Viton®: -29/204°C (-20/400°F)
7	S	<b>Base Materials</b>		
		SS316		
8	D E K 3 4 5 6 12	<b>Drive Mount</b>	<i>Max System Pressure (MAWP)</i> MP Housing (114/210 Style): 21 Bar(300 psi) Deck Ports NEMA 56C: 103 Bar (1500 psi) NEMA 143/145TC: 103 Bar (1500 psi) IEC 63-B5: 103 Bar (1500 psi) IEC 63-B14: 103 Bar (1500 psi) IEC 71-B5: 103 Bar (1500 psi) IEC 71-B14: 103 Bar (1500 psi) IEC 71-B14 to "F" Mount: 69 Bar (1000 psi)	<i>Weight (Pumphead)</i> 1.7 kg (3.7 lbs) 2.3 kg (5.1 lbs) 2.3 kg (5.1 lbs) 2.3 kg (5.1 lbs) 2.3 kg (5.1 lbs) 2.3 kg (5.1 lbs) 2.3 kg (5.1 lbs) 2.7 kg (6.0 lbs)

**Options** Add Option codes after the Base Code to modify features or enhance the product.

<b>Bushings (PC15)</b>		
D1	Carbon Bushing(s)	1
<b>Port Orientation (PC18)</b>		
Q1	Deck Ports	1/4-18 (F) NPT Side Ports

**Notes**

- 1 Application details required before order entry.

ACTUAL PERFORMANCE MAY VARY - Specifications are subject to change without notice. When multiple specs are noted, the most conservative value applies.

USA: Micropump, Inc., A Unit of IDEX Corporation • Phone 360.253.2008 • Fax 360.253.2401

UK: Micropump, Ltd., A Subsidiary of Micropump, Inc. • Phone +44 (1480) 356900 • Fax +44 (1480) 356920

info@micropump.com


www.micropump.com

GK000S.2

Page 1 of 1

Printed 30-May-01

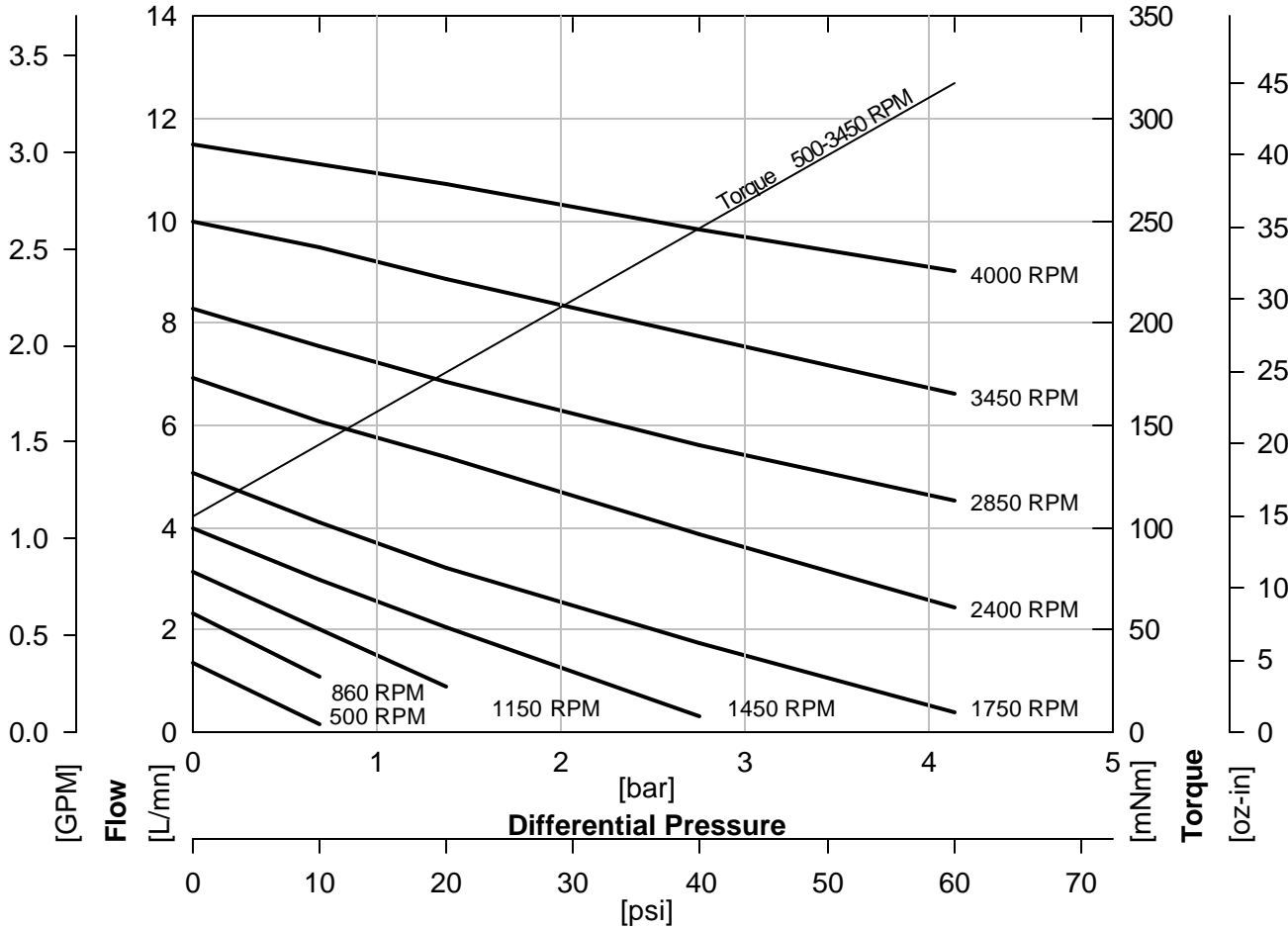


<b>Order Code</b>				<b>Pump Construction</b>			
<b>Base Code</b>		Gear Set		Drive Mount		<b>Options</b>	
<b>G</b>	<b>K</b>	-	<b>K23</b>				
1	2	3	4	5	6	7	8
Model			Wetted Materials			O/C: Pump S/K: Service Kit	
<p>Magnetic Drive Gear Pump Cavity Style Two Helical, Shafted Gears/DP16 Sleeve Bushings O-Ring Seals (Qty 3)</p> 							

## Performance

GK-K23

Water @ 1 CP



ACTUAL PERFORMANCE MAY VARY - Specifications are subject to change without notice. When multiple specs are noted, the most conservative value applies.

USA: Micropump, Inc., A Unit of IDEX Corporation • Phone 360.253.2008 • Fax 360.253.2401

UK: Micropump, Ltd., A Subsidiary of Micropump, Inc. • Phone +44 (1480) 356900 • Fax +44 (1480) 356920

info@micropump.com

www.micropump.com

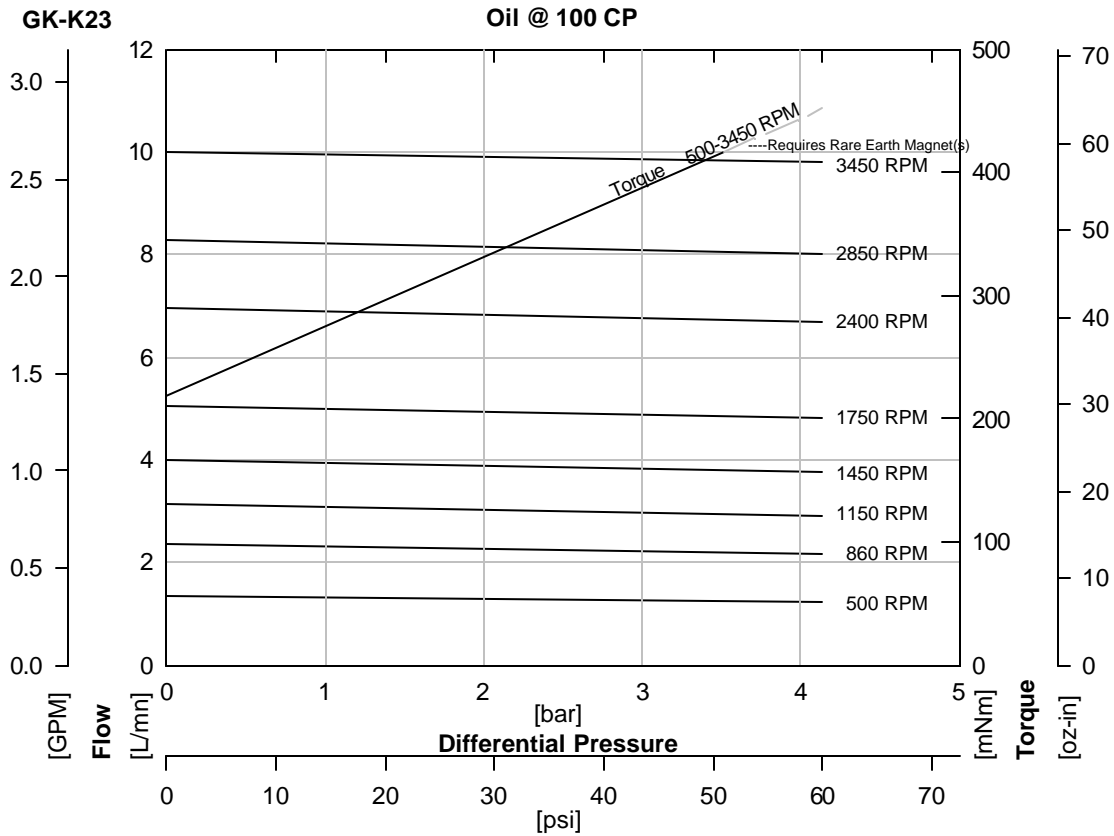
GK100 Rev A

Page 1

Printed 30-May-01

<b>Order Code</b>				<b>Pump Construction</b>				
<b>Base Code</b>		Gear Set	Drive Mount		<b>Options</b>			
G	K	-	K23					
1	2	3	4	5	6	7		
Model			Wetted Materials			O/C: Pump S/K: Service Kit		
Magnetic Drive Gear Pump Cavity Style Two Helical, Shafted Gears/DP16 Sleeve Bushings O-Ring Seals (Qty 3)								

## Performance-High Viscosity



$$\text{Watts} = \frac{\text{Torque [mNm]} \times \text{Speed [RPM]}}{9555}$$

$$\text{HP} = \frac{\text{Torque [oz-in]} \times \text{Speed [RPM]}}{1.008 \times 10^6}$$

To calculate torque, multiply correction factor by torque from viscosity curve above.

Torque Correction Factors: For Higher Viscosity Liquids				
Viscosity [cp]		1	100	1500
Max Speed [RPM]		3450	3450	860
[Bar]	[psi]			
0.3	5	0.5	1	1.6
1.4	20	0.6	1	1.5
2.8	40	0.7	1	1.4
4.1	60	0.7	1	1.3

Magnet Decouple Torque			
Driven Magnet	Driving Hub	Torque [mNm]	Torque [oz-in]
Ferrite	Ferrite	417	59

ACTUAL PERFORMANCE MAY VARY - Specifications are subject to change without notice. When multiple specs are noted, the most conservative value applies.

USA: Micropump, Inc., A Unit of IDEX Corporation • Phone 360.253.2008 • Fax 360.253.2401

UK: Micropump, Ltd., A Subsidiary of Micropump, Inc. • Phone +44 (1480) 356900 • Fax +44 (1480) 356920

info@micropump.com

www.micropump.com

GK100 Rev A

Page 2

Printed 30-May-01

<p><b>Order Code</b></p> <table style="width: 100%; border-collapse: collapse;"> <tr> <td style="width: 15%;"><b>Base Code</b></td> <td style="width: 15%; text-align: center;">Gear Set</td> <td style="width: 15%;"></td> <td style="width: 15%; text-align: center;">Drive Mount</td> <td style="width: 15%;"><b>Options</b></td> </tr> <tr> <td style="border: 1px solid black; text-align: center;">G</td> <td style="border: 1px solid black; text-align: center;">K</td> <td style="border: 1px solid black; text-align: center;">-</td> <td style="border: 1px solid black; text-align: center;">K23</td> <td style="border: 1px solid black;"></td> </tr> <tr> <td style="text-align: center;">1</td> <td style="text-align: center;">2</td> <td style="text-align: center;">3</td> <td style="text-align: center;">4</td> <td style="text-align: center;">5</td> </tr> <tr> <td colspan="3" style="text-align: center;">Model</td> <td colspan="2" style="text-align: center;">Wetted Materials</td> </tr> </table> <div style="border: 1px solid black; padding: 2px; width: fit-content; margin-top: 5px;">         O/C: Pump          S/K: Service Kit       </div>	<b>Base Code</b>	Gear Set		Drive Mount	<b>Options</b>	G	K	-	K23		1	2	3	4	5	Model			Wetted Materials		<p><b>Pump Construction</b></p> <p>Magnetic Drive Gear Pump          Cavity Style          Two Helical, Shafted Gears/DP16          Sleeve Bushings          O-Ring Seals (Qty 3)</p>
<b>Base Code</b>	Gear Set		Drive Mount	<b>Options</b>																	
G	K	-	K23																		
1	2	3	4	5																	
Model			Wetted Materials																		

## Specification

	SI	US
Displacement	3.15 ml/rev	0.83 gal/1000*rev
Max Flow (4 Pole Speed)	4.6 L/mn 1450 RPM (50Hz)	1.5 gal/mn 1750 RPM (60Hz)
Max Flow (2 Pole Speed)	9.0 L/mn 2850 RPM (50Hz)	2.9 gal/mn 3450 RPM (60Hz)
Max Differential Pressure	1 4.2 Bar	60 psi
Max System Pressure (MAWP)	See Drive Mount	See Drive Mount
NIPR (Absolute)	180 mBar	2.5 psia
Wet Lift (Typical)	2 51 cm.H2O (1450 RPM)	24 in.H2O (1750 RPM)
Temp Range	3 See Gear Material	See Gear Material
Viscosity Range	4 0.2 to 1500 cp	0.2 to 1500 cp
Max Speed	4,000 RPM	4,000 RPM
Rotation (Facing Motor Shaft)	CW	CW
Weight (Pumphead)	1.7 kg	3.7 lbs
Dimensions (LxWxH)	See Drawing	See Drawing
Ports	1/4-18 (F) NPT Side Ports	1/4-18 (F) NPT Side Ports
Driven Magnet (Standard)	Ferrite	Ferrite
Optional Internal Bypass	No	No

**Notes**

- 1 See Product Options. Max pressure depends on gear material.
- 2 Priming ability varies with operating conditions.
- 3 See Product Options for specific temp limits.
- 4 See Performance-High Viscosity for viscosity limits.

ACTUAL PERFORMANCE MAY VARY - Specifications are subject to change without notice. When multiple specs are noted, the most conservative value applies.

USA: Micropump, Inc., A Unit of IDEX Corporation • Phone 360.253.2008 • Fax 360.253.2401

UK: Micropump, Ltd., A Subsidiary of Micropump, Inc. • Phone +44 (1480) 356900 • Fax +44 (1480) 356920

info@micropump.com

www.micropump.com

GK100 Rev A

Page 3

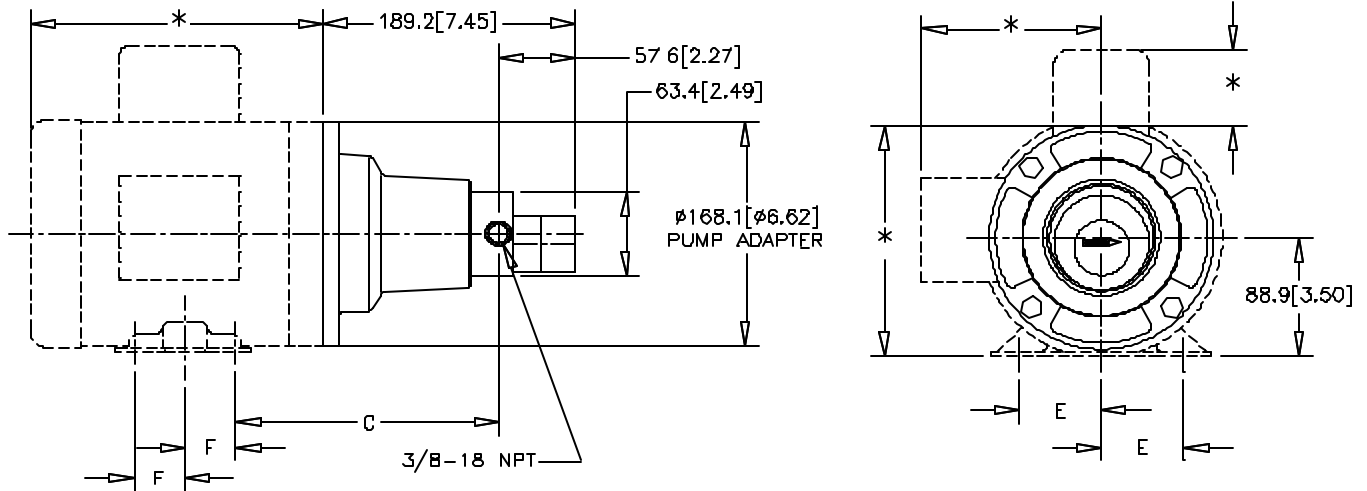
Printed 30-May-01



<b>Order Code</b>								<b>Pump Construction</b>	
<b>Base Code</b>		Gear Set			Drive Mount			<b>Options</b>	
<b>G</b>	<b>K</b>	-	<b>K23</b>				<b>E</b>		
1	2	3	4	5	6	7	8		
Model			Wetted Materials			O/C: Pump S/K: Service Kit			
								Magnetic Drive Gear Pump Cavity Style Two Helical, Shafted Gears/DP16 Sleeve Bushings O-Ring Seals (Qty 3)	



## Dimension



MOUNT	C mm [in]	E mm [in]	F mm [in]
<sup>E</sup> NEMA 56C	196.9 [7.75]	61.9 [2.44]	38.1 [1.50]
<sup>K</sup> NEMA 143TC	192.0 [7.56]	69.9 [2.75]	50.8 [2.00]
<sup>K</sup> NEMA 145TC	192.0 [7.56]	69.9 [2.75]	63.5 [2.50]

### NOTES:

- \*THESE DIMENSIONS WILL VARY BASED ON MOTOR SELECTION.
- ALL DIMENSIONS ARE NOMINAL.

ACTUAL PERFORMANCE MAY VARY - Specifications are subject to change without notice. When multiple specs are noted, the most conservative value applies.

USA: Micropump, Inc., A Unit of IDEX Corporation • Phone 360.253.2008 • Fax 360.253.2401

UK: Micropump, Ltd., A Subsidiary of Micropump, Inc. • Phone +44 (1480) 356900 • Fax +44 (1480) 356920

info@micropump.com

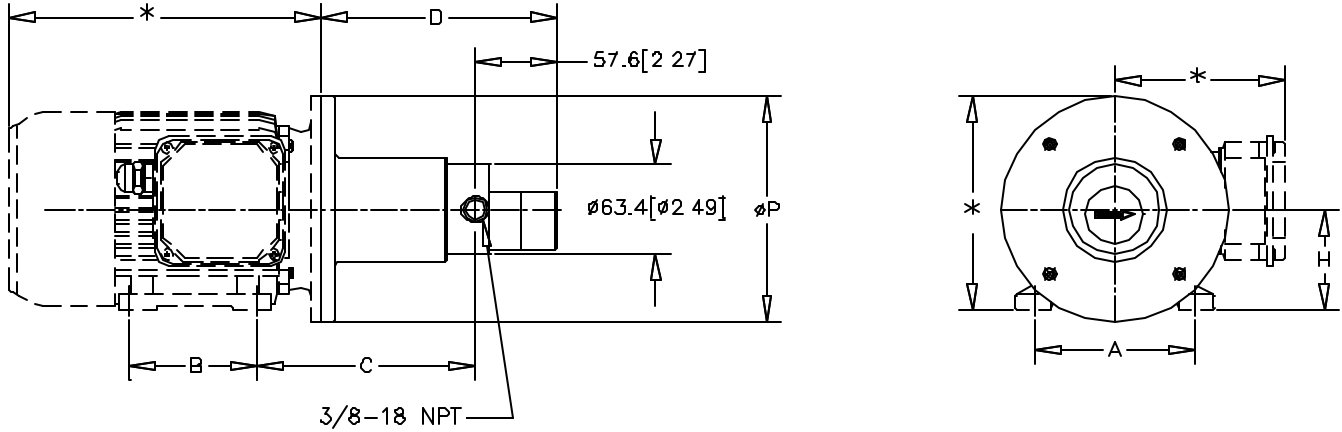
www.micropump.com



<b>Order Code</b>				<b>Pump Construction</b>			
<b>Base Code</b>		Gear Set		Drive Mount		<b>Options</b>	
G	K	-	K23	5	6	7	3
1	2	3	4	5	6	7	8
Model			Wetted Materials			O/C: Pump S/K: Service Kit	
Magnetic Drive Gear Pump Cavity Style Two Helical, Shafted Gears/DP16 Sleeve Bushings O-Ring Seals (Qty 3)							



## Dimension



MOUNT	A mm [in]	B mm [in]	C mm [in]	D mm [in]	H mm [in]	P mm [in]
<sup>4</sup> IEC63B14B3	100 [3.94]	80 [3.15]	142.3 [5.60]	159.8 [6.29]	63 [2.48]	140 [5.51]
<sup>6</sup> IEC71B14B3	112 [4.41]	90 [3.54]	154.2 [6.07]	166.8 [6.57]	71 [2.80]	160 [6.30]

### NOTES:

1. \*THESE DIMENSIONS WILL VARY BASED ON MOTOR SELECTION.
2. ALL DIMENSIONS ARE NOMINAL.


ACTUAL PERFORMANCE MAY VARY - Specifications are subject to change without notice. When multiple specs are noted, the most conservative value applies.

USA: Micropump, Inc., A Unit of IDEX Corporation • Phone 360.253.2008 • Fax 360.253.2401

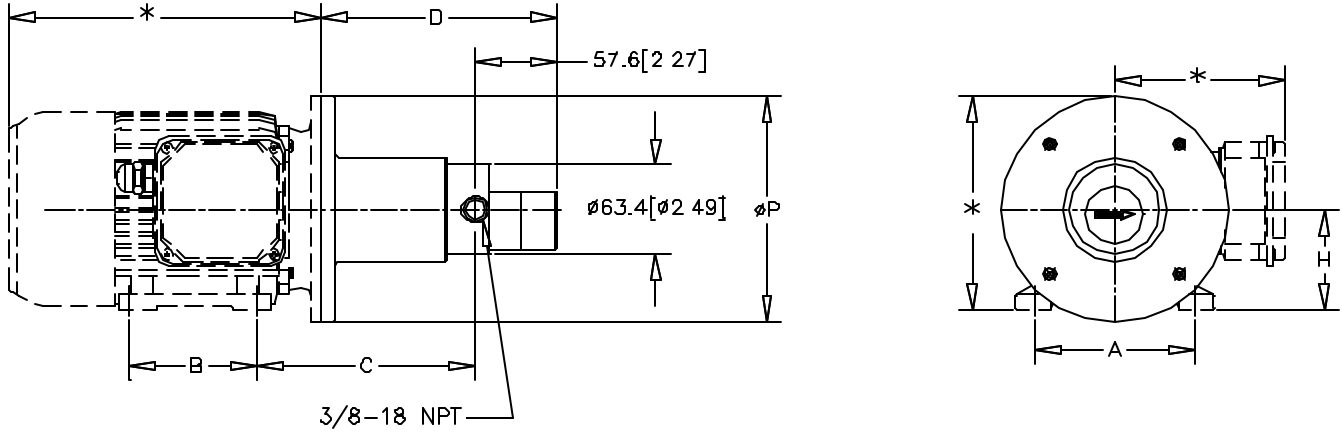
UK: Micropump, Ltd., A Subsidiary of Micropump, Inc. • Phone +44 (1480) 356900 • Fax +44 (1480) 356920

info@micropump.com

www.micropump.com

<b>Order Code</b>				<b>Pump Construction</b>			
<b>Base Code</b>		Gear Set	Drive Mount		<b>Options</b>		
G	K	-	K23	4			
1	2	3	4	5	6	7	
Model				Wetted Materials		O/C: Pump S/K: Service Kit	
Magnetic Drive Gear Pump Cavity Style Two Helical, Shafted Gears/DP16 Sleeve Bushings O-Ring Seals (Qty 3)							

## Dimension



MOUNT	A mm [in]	B mm [in]	C mm [in]	D mm [in]	H mm [in]	P mm [in]
<sup>4</sup> IEC63B14B3	100 [3.94]	80 [3.15]	142.3 [5.60]	159.8 [6.29]	63 [2.48]	140 [5.51]
<sup>6</sup> IEC71B14B3	112 [4.41]	90 [3.54]	154.2 [6.07]	166.8 [6.57]	71 [2.80]	160 [6.30]

### NOTES:

1. \*THESE DIMENSIONS WILL VARY BASED ON MOTOR SELECTION.
2. ALL DIMENSIONS ARE NOMINAL.

ACTUAL PERFORMANCE MAY VARY - Specifications are subject to change without notice. When multiple specs are noted, the most conservative value applies.

USA: Micropump, Inc., A Unit of IDEX Corporation • Phone 360.253.2008 • Fax 360.253.2401

UK: Micropump, Ltd., A Subsidiary of Micropump, Inc. • Phone +44 (1480) 356900 • Fax +44 (1480) 356920

info@micropump.com

www.micropump.com

GK104 Rev A  
Dimensions 1