

<p>Order Code</p> <p style="text-align: center;"> Gear Set Drive Mount </p> <table border="1" style="width:100%; border-collapse: collapse; text-align: center;"> <tr> <td style="width: 12.5%;">G</td> <td style="width: 12.5%;">N</td> <td style="width: 12.5%;"></td> <td style="width: 12.5%;"></td> <td style="width: 12.5%;"></td> <td style="width: 12.5%;"></td> <td style="width: 12.5%;"></td> <td style="width: 12.5%;"></td> <td style="width: 12.5%;"></td> <td style="width: 12.5%;"></td> </tr> <tr> <td>1</td> <td>2</td> <td>3</td> <td>4</td> <td>5</td> <td>6</td> <td>7</td> <td>8</td> <td colspan="2"></td> </tr> <tr> <td colspan="3">Model</td> <td colspan="3">Wetted Materials</td> <td colspan="4">Options</td> </tr> </table> <p style="text-align: right; margin-top: 5px;"> O/C: Pump S/K: Service Kit </p>	G	N									1	2	3	4	5	6	7	8			Model			Wetted Materials			Options				<p>Pump Construction</p> <p>Magnetic Drive Gear Pump Cavity Style Three Helical, Shafted Gears/DP10 Sleeve Bushings O-Ring Seals (Qty 3)</p>
G	N																														
1	2	3	4	5	6	7	8																								
Model			Wetted Materials			Options																									

Base Code Select a code character for each numbered position to configure the product.

1	Code	Product Type	Specifications	Notes
	G	Gear Pump		
2	Product Series		<i>Max System Pressure (MAWP)</i> <i>Ports</i>	
	N	Series 10K	35 Bar (500 psi) 3/4-14 (F) NPT Side Ports	
3	Design Modifier			
	-	Standard Design		1
	H	High System Pressure		2
4	Gear Set (Width/N°Gears/Pitch)		<i>Displacement</i> <i>Max Differential Pressure</i> <i>Driven Magnet (Standard)</i>	
	G35	1.250/3/10	24.5 ml/rev (6.5 gal/1000*rev) 6.9 Bar (100 psi) Samarium Cobalt (SmCo)	
5	Gear Material		<i>Max Differential Pressure</i> <i>Temp Range</i>	
	F	PTFE	3.5 Bar (50 psi) -46/54°C (-50/130°F)	
	J	PEEK (carbon fiber/ptfe)	8.7 Bar (125 psi) -46/121°C (-50/250°F)	3
6	Static Seals		<i>Temp Range</i>	
	F	PTFE	-46/232°C (-50/450°F)	
	V	Viton®	-29/204°C (-20/400°F)	
	D	EP	-46/149°C (-50/300°F)	
	B	Buna N	-29/121°C (-20/250°F)	
	F5	TEV (Teflon® encap Viton®)	-29/204°C (-20/400°F)	4
	K	Kalrez®	-29/260°C (-20/500°F)	
7	Base Materials			
	S	SS316		
	D	Alloy 20		
	T	Titanium		
	C	Hast C-276®		
	B	Hast B-2®		
8	Drive Mount		<i>Max System Pressure (MAWP)</i> <i>Weight (Pumphead)</i>	
	E	NEMA 56C	21 Bar (300 psi) 8.4 kg (18.5 lbs)	
	K	NEMA 143/145TC	21 Bar (300 psi) 8.4 kg (18.5 lbs)	
	7	IEC 80-B5	21 Bar (300 psi) 8.4 kg (18.5 lbs)	
	8	IEC 80-B14	21 Bar (300 psi) 8.4 kg (18.5 lbs)	

Options Add Option codes after the Base Code to modify features or enhance the product.

High System Pressure (PC14)		<i>Max System Pressure (MAWP)</i>	
CH10	1000 psi (Machined Cup)	69 Bar(1000 psi)	SS316
CH15	1500 psi (Machined Cup)	103 Bar(1500 psi)	Titan.Cup
Bushings (PC15)			
D1	Carbon Bushing(s)		
Shafts (PC16)			
S1	440C Shafts (Hardened)		
Ports/Fittings (PC17)		<i>Ports</i>	
F11	ANSI Flanges (1", 600#)	99 Bar(1440 psi)	Welded 316

Notes

- 1 Housing: 8 bolt.
- 2 Housing: 16 bolt. Also select High System Pressure Option (PC14).
- 3 Consult factory for higher temperatures.
- 4 Application details required before order entry.
- 5 Use with High System Pressure Option (PC03:H). Consult factory for other materials.

ACTUAL PERFORMANCE MAY VARY - Specifications are subject to change without notice. When multiple specs are noted, the most conservative value applies.

USA: Micropump, Inc., A Unit of IDEX Corporation • Phone 360.253.2008 • Fax 360.253.2401

UK: Micropump, Ltd., A Subsidiary of Micropump, Inc. • Phone +44 (1480) 356900 • Fax +44 (1480) 356920


info@micropump.com

www.micropump.com

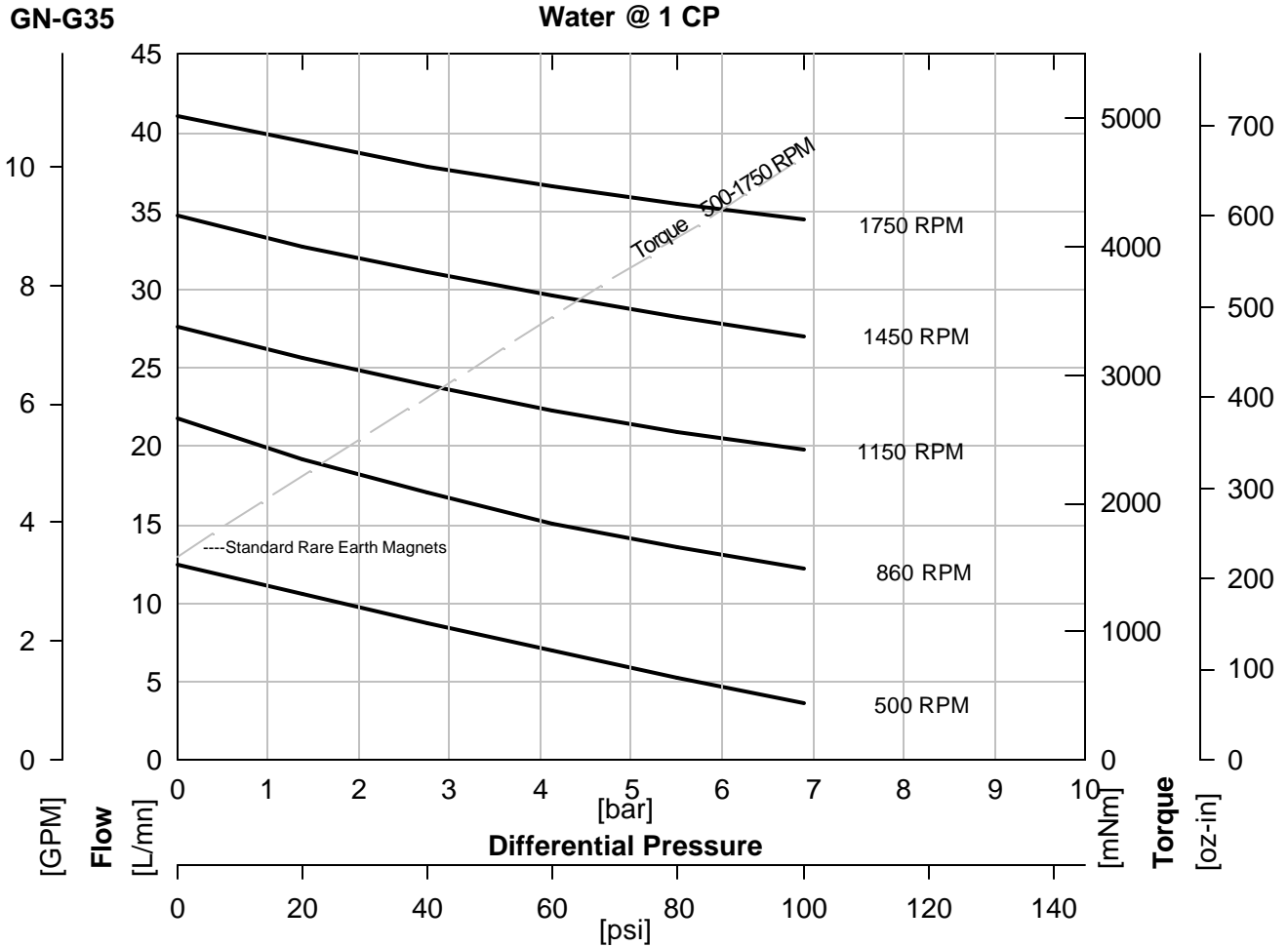
GN000S.2

Page 1 of 1

Printed 30-May-01

Order Code				Pump Construction			
Base Code		Gear Set		Drive Mount		Options	
G	N	-	G35				
1	2	3	4	5	6	7	8
Model			Wetted Materials			O/C: Pump S/K: Service Kit	
<p>Magnetic Drive Gear Pump Cavity Style Three Helical, Shafted Gears/DP10 Sleeve Bushings O-Ring Seals (Qty 3)</p> 							

Performance



ACTUAL PERFORMANCE MAY VARY - Specifications are subject to change without notice. When multiple specs are noted, the most conservative value applies.

USA: Micropump, Inc., A Unit of IDEX Corporation • Phone 360.253.2008 • Fax 360.253.2401

UK: Micropump, Ltd., A Subsidiary of Micropump, Inc. • Phone +44 (1480) 356900 • Fax +44 (1480) 356920

info@micropump.com

www.micropump.com

GN700 Rev A

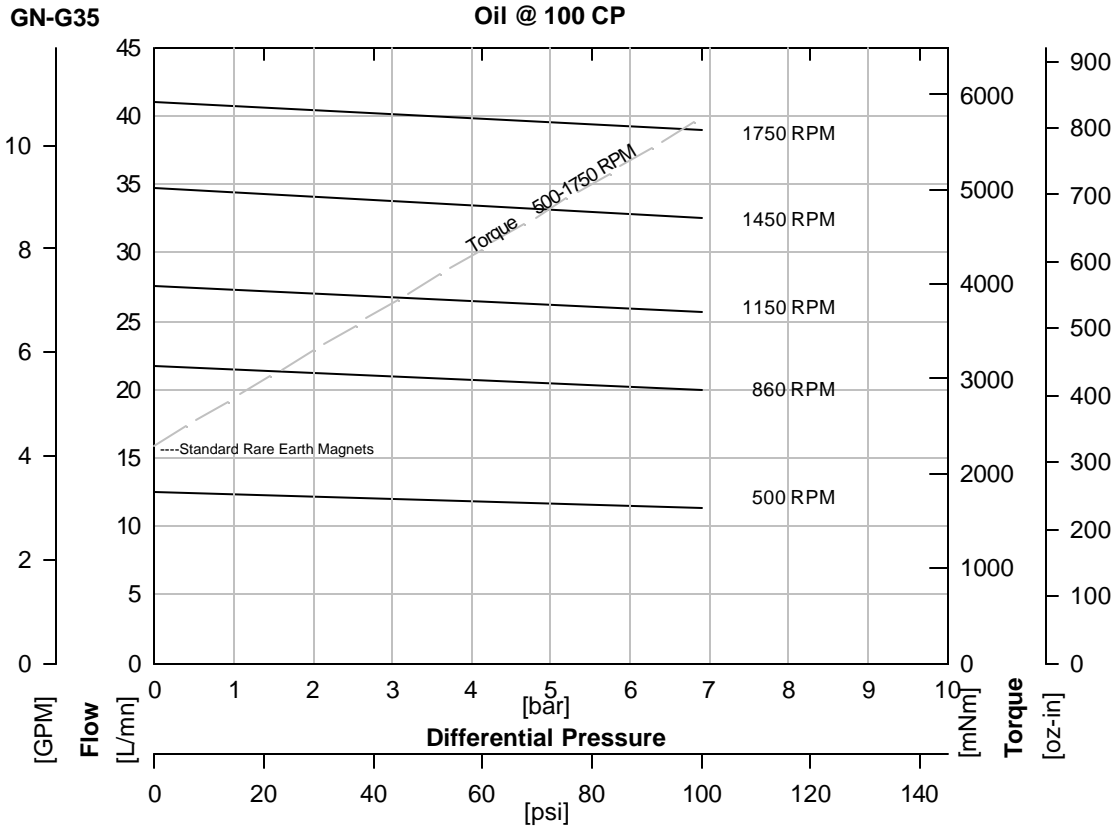
Page 1

Printed 30-May-01

Order Code				Pump Construction			
Base Code		Gear Set		Drive Mount		Options	
G	N	-	G35	•	•	•	•
1	2	3	4	5	6	7	8
Model			Wetted Materials			O/C: Pump S/K: Service Kit	
Magnetic Drive Gear Pump Cavity Style Three Helical, Shafted Gears/DP10 Sleeve Bushings O-Ring Seals (Qty 3)							



Performance-High Viscosity



$$\text{Watts} = \frac{\text{Torque [mNm]} \times \text{Speed [RPM]}}{9555}$$

$$\text{HP} = \frac{\text{Torque [oz-in]} \times \text{Speed [RPM]}}{1.008 \times 10^6}$$

To calculate torque, multiply correction factor by torque from viscosity curve above.

Torque Correction Factors: For Higher Viscosity Liquids				
Viscosity [cp]		1	100	2500
Max Speed [RPM]		1750	1750	200
[Bar]	[psi]			
0.3	5	0.7	1	1.6
1.4	20	0.7	1	1.6
2.8	40	0.8	1	1.6
4.1	60	0.8	1	
5.5	80	0.8	1	
6.9	100	0.8	1	

Magnet Decouple Torque			
Driven Magnet	Driving Hub	Torque [mNm]	Torque [oz.in]
SmCo	SmCo	5650	800

ACTUAL PERFORMANCE MAY VARY - Specifications are subject to change without notice. When multiple specs are noted, the most conservative value applies.

USA: Micropump, Inc., A Unit of IDEX Corporation • Phone 360.253.2008 • Fax 360.253.2401

UK: Micropump, Ltd., A Subsidiary of Micropump, Inc. • Phone +44 (1480) 356900 • Fax +44 (1480) 356920

info@micropump.com

www.micropump.com

Order Code				Pump Construction			
Base Code		Gear Set		Drive Mount		Options	
G	N	-	G35	•	•	•	
1	2	3	4	5	6	7	8
Model			Wetted Materials			O/C: Pump S/K: Service Kit	
Magnetic Drive Gear Pump							
Cavity Style							
Three Helical, Shafted Gears/DP10							
Sleeve Bushings							
O-Ring Seals (Qty 3)							

Specification

	SI	US
Displacement	24.5 ml/rev	6.5 gal/1000*rev
Max Flow (4 Pole Speed)	35.6 L/mn 1450 RPM (50Hz)	11.4 gal/mn 1750 RPM (60Hz)
Max Flow (2 Pole Speed)	69.9 L/mn 2850 RPM (50Hz)	22.4 gal/mn 3450 RPM (60Hz)
Max Differential Pressure	1 6.9 Bar	100 psi
Max System Pressure (MAWP)	See Drive Mount	See Drive Mount
NIPR (Absolute)	180 mBar	2.5 psia
Wet Lift (Typical)	2 51 cm.H2O (1450 RPM)	24 in.H2O (1750 RPM)
Temp Range	3 See Gear Material	See Gear Material
Viscosity Range	4 0.2 to 2500 cp	0.2 to 2500 cp
Max Speed	1,750 RPM	1,750 RPM
Rotation (Facing Motor Shaft)	CW	CW
Weight (Pumphead)	8.4 kg	18.5 lbs
Dimensions (LxWxH)	See Drawing	See Drawing
Ports	3/4-14 (F) NPT Side Ports	3/4-14 (F) NPT Side Ports
Driven Magnet (Standard)		
Optional Internal Bypass	No	No

Notes

- 1 See Product Options. Max pressure depends on gear material.
- 2 Priming ability varies with operating conditions.
- 3 See Product Options for specific temp limits.
- 4 See Performance-High Viscosity for viscosity limits.

ACTUAL PERFORMANCE MAY VARY - Specifications are subject to change without notice. When multiple specs are noted, the most conservative value applies.

USA: Micropump, Inc., A Unit of IDEX Corporation • Phone 360.253.2008 • Fax 360.253.2401

UK: Micropump, Ltd., A Subsidiary of Micropump, Inc. • Phone +44 (1480) 356900 • Fax +44 (1480) 356920

info@micropump.com

www.micropump.com

GN700 Rev A

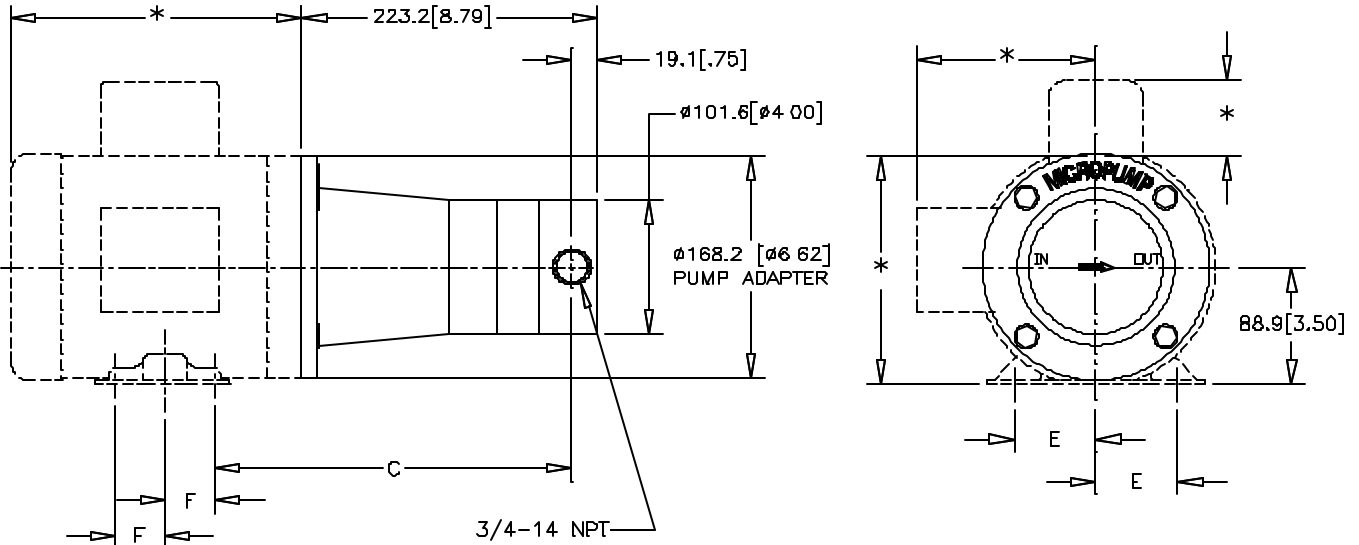
Page 3

Printed 30-May-01

Order Code								Pump Construction	
Base Code		Gear Set			Drive Mount			Options	
G	N	-	G35				E		
1	2	3	4	5	6	7	8		
Model			Wetted Materials			O/C: Pump S/K: Service Kit			
								Magnetic Drive Gear Pump Cavity Style Three Helical, Shafted Gears/DP10 Sleeve Bushings O-Ring Seals (Qty 3)	



Dimension



MOUNT	C mm [in]	E mm [in]	F mm [in]
NEMA ^E 56C	269.5 [10.61]	61.9 [2.44]	38.1 [1.50]
NEMA ^K 143TC	264.6 [10.42]	69.9 [2.75]	50.8 [2.00]
NEMA ^K 145TC	264.6 [10.42]	69.9 [2.75]	63.5 [2.50]

NOTES:

- *THESE DIMENSIONS WILL VARY BASED ON MOTOR SELECTION.
- ALL DIMENSIONS ARE NOMINAL.


ACTUAL PERFORMANCE MAY VARY - Specifications are subject to change without notice. When multiple specs are noted, the most conservative value applies.

USA: Micropump, Inc., A Unit of IDEX Corporation • Phone 360.253.2008 • Fax 360.253.2401

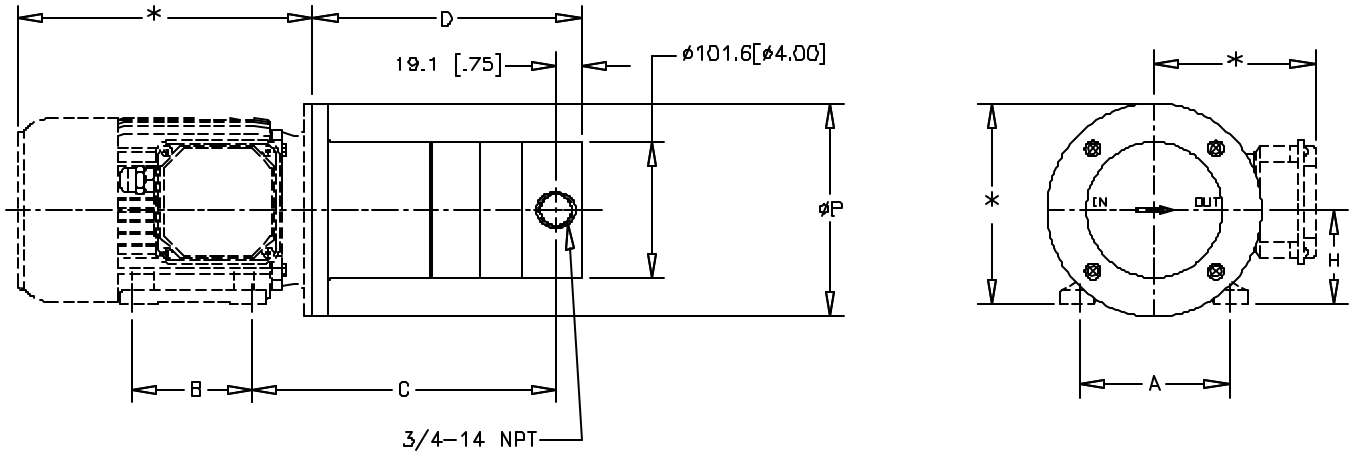
UK: Micropump, Ltd., A Subsidiary of Micropump, Inc. • Phone +44 (1480) 356900 • Fax +44 (1480) 356920

info@micropump.com

www.micropump.com

Order Code								Pump Construction	
Base Code		Gear Set		Drive Mount		Options		 <p>Magnetic Drive Gear Pump Cavity Style Three Helical, Shafted Gears/DP10 Sleeve Bushings O-Ring Seals (Qty 3)</p>	
G	N	-	G35			7			
1	2	3	4	5	6	7	8		
Model			Wetted Materials			O/C: Pump S/K: Service Kit			

Dimension



MOUNT	A mm [in]	B mm [in]	C mm [in]	D mm [in]	H mm [in]	P mm [in]
7 IEC80B5B3	125 [4.92]	100 [3.94]	241.8 [9.52]	210.8 [8.30]	80 [3.15]	200 [7.87]

NOTES:

- *THESE DIMENSIONS WILL VARY BASED ON MOTOR SELECTION.
- ALL DIMENSIONS ARE NOMINAL.


ACTUAL PERFORMANCE MAY VARY - Specifications are subject to change without notice. When multiple specs are noted, the most conservative value applies.

USA: Micropump, Inc., A Unit of IDEX Corporation • Phone 360.253.2008 • Fax 360.253.2401

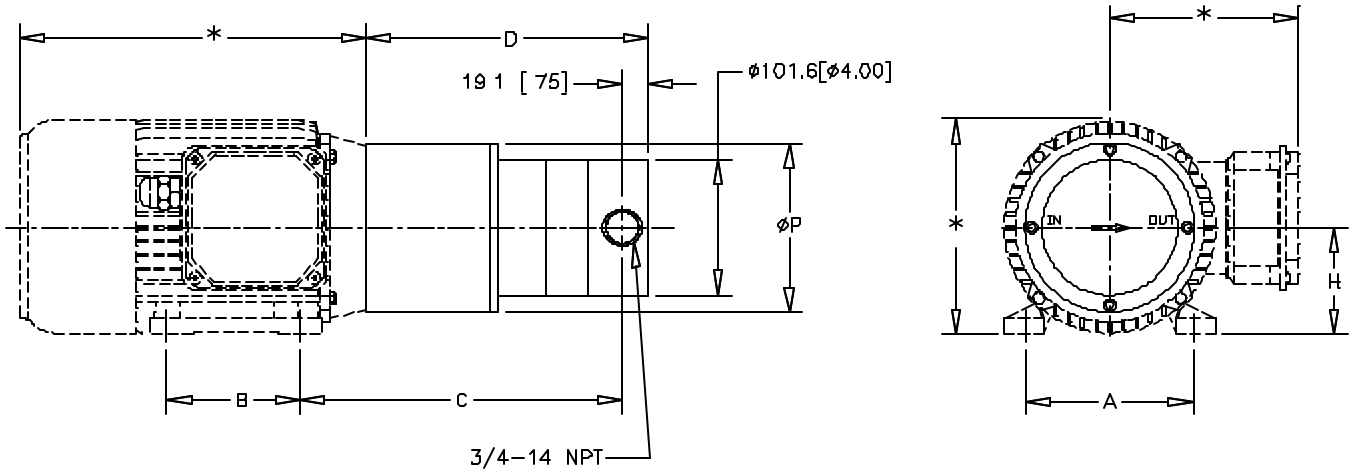
UK: Micropump, Ltd., A Subsidiary of Micropump, Inc. • Phone +44 (1480) 356900 • Fax +44 (1480) 356920

info@micropump.com

www.micropump.com

Order Code								Pump Construction		
Base Code		Gear Set		Drive Mount		Options		 <p>Magnetic Drive Gear Pump Cavity Style Three Helical, Shafted Gears/DP10 Sleeve Bushings O-Ring Seals (Qty 3)</p>		
G	N	-	G35				8			
1	2	3	4	5	6	7	8			
Model			Wetted Materials			O/C: Pump S/K: Service Kit				

Dimension



MOUNT	A mm [In]	B mm [In]	C mm [In]	D mm [In]	H mm [In]	P mm [In]
⁸ IECB0B14B3	125 [4.92]	100 [3.94]	241.2 [9.52]	210.8 [8.30]	80 [3.15]	120 [4.72]
¹⁰ IEC90SB14B3	140 [5.51]	100 [3.94]	260.2 [10.24]	223.2 [8.79]	90 [3.54]	140 [5.51]

NOTES:

- *THESE DIMENSIONS WILL VARY BASED ON MOTOR SELECTION.
- ALL DIMENSIONS ARE NOMINAL.

ACTUAL PERFORMANCE MAY VARY - Specifications are subject to change without notice. When multiple specs are noted, the most conservative value applies.

USA: Micropump, Inc., A Unit of IDEX Corporation • Phone 360.253.2008 • Fax 360.253.2401

UK: Micropump, Ltd., A Subsidiary of Micropump, Inc. • Phone +44 (1480) 356900 • Fax +44 (1480) 356920

info@micropump.com

www.micropump.com