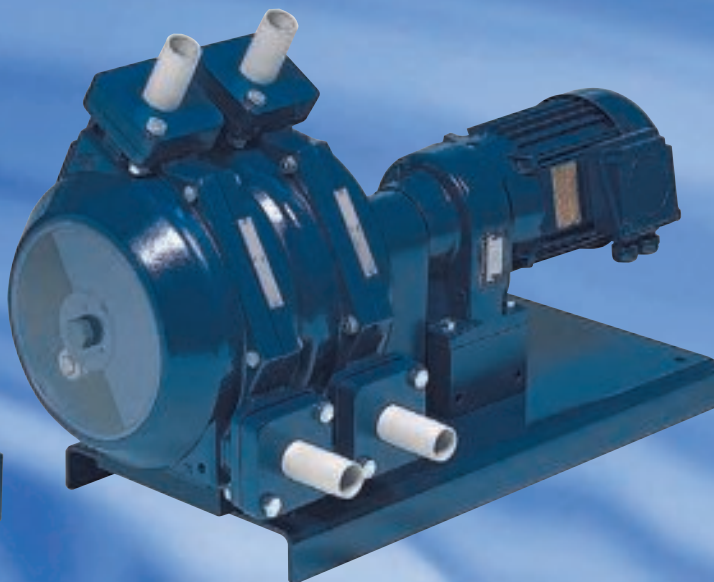


# Ponndorf

## PDX & PDX/2 Series Pumps



PDX series  
single-channel  
pump



PDX/2 series  
dual-channel  
pump



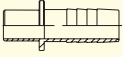
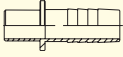
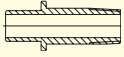
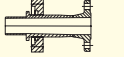
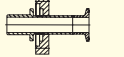
- Metering, transfer, self-priming, and low-pulsation models
- Flow capacities are available up to 4.0 m<sup>3</sup>/hr (18 GPM) for single hose and up to 6.7 m<sup>3</sup>/hr (29 GPM) with our unique dual hose design
- Food-grade tubing is ideal for demanding pump applications in food, pharmaceutical, high-purity chemicals, and higher temperature applications
- Pressure up to 2 bar (30 psig)
- Handles hot fluids up to 130°C (266°F)
- Dry running design provides long tubing life and prevents system contamination should the hose ever rupture
- Easy maintenance and hose replacement—without disassembly of the pump
- Flanged tube bed prevents side-to-side movement of hose and improves hose life
- Pumps are shipped complete with motor and fixed-speed drive systems ready to install and start
- Optional drives include mechanical variable speed, variable-frequency, hazardous-area rate, washdown, chemical duty, and air-operated, or base shaft pumps only
- Dual hose models (PDX/2) available



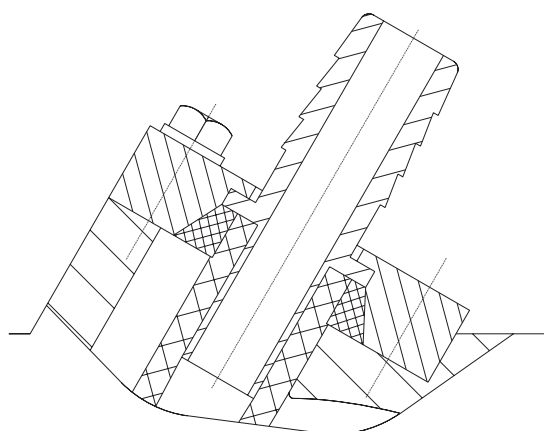
| Catalog number                                      | PDX 19   | PDX 19/2                                   | PDX 30                                     | PDX 30/2                                   | PDX 35                                     | PDX 35/2                                   |
|---|--|--|--|--|--|--|
| Normal capacity 165 rpm<br>m <sup>3</sup> /hr (GPM) | 0.5<br>(2.2)                                   | 0.85<br>(3.7)                              | 2.7<br>(12)                                | 4.5<br>(20)                                | 4.0<br>(18)                                | 6.7<br>(30)                                |
| Normal capacity 100 rpm<br>m <sup>3</sup> /hr (GPM) | 0.3<br>(1.3)                                   | 0.5<br>(2.2)                               | 1.7<br>(7.5)                               | 2.7<br>(12)                                | 2.5<br>(11)                                | 4.0<br>(18)                                |
| Hose ID, mm (in.)                                   | 19 (0.75)                                      | 19 (0.75)                                  | 30 (1.18)                                  | 30 (1.18)                                  | 30 (1.18)                                  | 30 (1.18)                                  |
| Connection OD, mm (in.)                             | 25 (0.98)                                      | 25 (0.98)                                  | 33 (1.30)                                  | 33 (1.30)                                  | 51 (2.0)                                   | 51 (2.0)                                   |
| Max power, hp (kW)                                  | ½ (0.37)                                       | 1 (0.75)                                   | ¾ (0.56)                                   | 1½ (1.1)                                   | 1½ (1.1)                                   | 2 (2.2)                                    |
| Dimensions (L x W x H),<br>mm (in.)                 | 600 x 300 x 332<br>(23.62 x 11.81 x 12.68)     | 600 x 300 x 322<br>(23.62 x 11.81 x 12.68) | 600 x 300 x 446<br>(23.62 x 11.81 x 17.56) | 600 x 300 x 446<br>(23.62 x 11.81 x 17.56) | 860 x 400 x 577<br>(33.86 x 15.76 x 23.23) | 860 x 400 x 577<br>(33.86 x 15.76 x 23.23) |
| Est. wt with motor kg (lb)                          | 38 (84)  | 49 (107)                                   | 49 (107)                                   | 69 (152)                                   | 92 (202)                                   | 139 (306)                                  |
| <b>Construction materials</b>                       |  |  |  |  |  |  |
| Housing   | Cast aluminum                                  |  |  |  |  |  |
| Tube bed  | PTFE   |  |  |  |  |  |
| Inlet/outlet fittings                               | Polypropylene or 316 SS                        |  |  |  |  |  |
| Rollers   | Carbon-filled PTFE                             |  |  |  |  |  |
| Rotor   | Cast aluminum                                  |  |  |  |  |  |
| Shaft   | Stainless steel                                |  |  |  |  |  |
| Bearings  | Permanently sealed grease filled ball bearings |  |  |  |  |  |
| Hose material options                               | Food grade Ponnprene—TPE (PP/EPDM)             |  |  |  |  |  |
| Max rpm   | 165  |  |  |  |  |  |
| Max temperature<br>(continuous)                     | 90°C (194°F)                                   |  |  |  |  |  |
| Max temperature<br>(intermittent)                   | 130°C (266°F)                                  |  |  |  |  |  |
| Max pressure  | 2 bar (30 psig)                                |  |  |  |  |  |
| Max suction height                                  | 7 m (23 ft)                                    |  |  |  |  |  |
| Max viscosity                                       | 35,000 cPs (160,000 ssu)                       |  |  |  |  |  |

Optional inlet and outlet connections available include ANSI 150# flanges, sanitary Tri-Clamp® fittings, and NPT connections.

**Note:** Connectors and hose must be ordered separately.

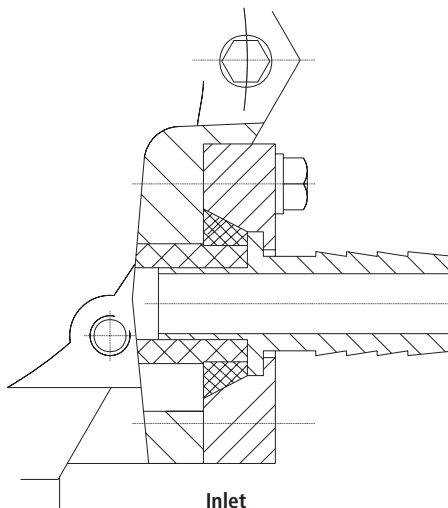
| Pump series        |  |          |  |          |  |          |  |          |  |          |
|--------------------|---|----------|---|----------|---|----------|---|----------|---|----------|
|                    | Polypropylene   |          | Stainless steel   |          | Stainless steel   |          | Stainless steel   |          | Stainless steel   |          |
|                    | Hose ID (mm)  | Cat. no. | Hose ID (mm)  | Cat. no. | NPT   | Cat. no. | Flange size*  | Cat. no. | Tri-Clamp size  | Cat. no. |
| PDX 19 or PDX 19/2 | 25.2  | VA-61810 | 25.2  | VA-61811 | ½"  | VA-61812 | ½"  | VA-61813 | ½"  | VA-61821 |
| PDX 30 or PDX 30/2 | 33.0  | VA-61214 | 33.0  | VA-61215 | 1"  | VA-61216 | 1"  | VA-61621 | 1"  | VA-61921 |
| PDX 35 or PDX 35/2 | 51.0  | VA-62010 | 51.0  | VA-62011 | 1½"   | VA-62012 | 1½"   | VA-62013 | 1½"   | VA-62021 |

\*ANSI 150# flange



Discharge

Compression ring  
secures hose against  
inlet/discharge connector,  
providing a leak-proof  
connection



Inlet