



Griffco Valve Inc.

3 North Main Street
 Middleport, NY 14105
 Phone: 1 800-474-3326
 Fax: 1 716-735-3166

T-SERIES BACK PRESSURE VALVES



Griffco diaphragm back pressure valves are designed to enhance the performance of chemical feed systems by applying a continuous back pressure to the chemical feed pump, while also acting as an anti-syphon valve. Robust construction ensures reliability in the rigorous service of municipal and industrial applications. Wetted materials include: **PVC, CPVC, PP, PVDF, PTFE, 316 SS, A 20 and Hast. C.** Available sizes: 1/4" - 1/2".

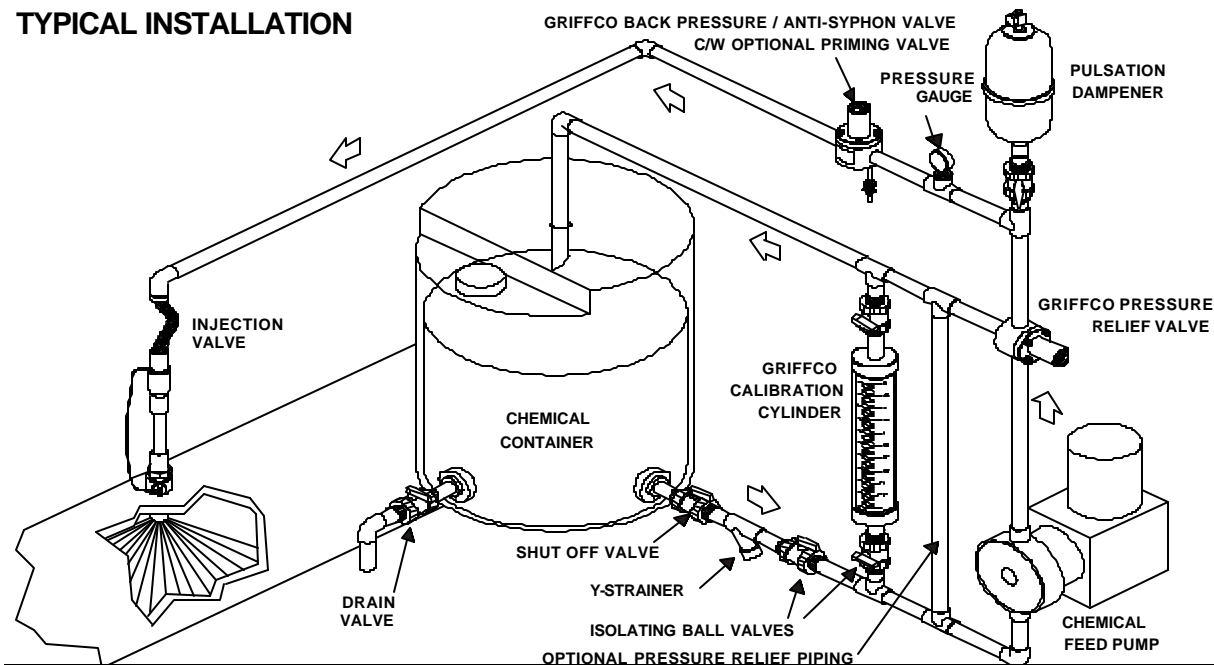
Features:

- High Reliability / Low Cost
- No Bolts on Plastic Models
- Compact Size for OEM Applications
- Adjustable 10 - 150 PSI
- Optional 350 PSI Rated Valve
- Anti-Siphon Function
- Robust, Machined Construction
- Vulcanised PTFE/EPDM Diaphragm
- Wide Range of Materials

Operation:

Griffco diaphragm back pressure valves apply positive discharge pressure to a metering pump system to prevent siphoning and eliminate varying dosage rates caused by fluctuating downstream pressure. The diaphragm is held against the valve seat by an internal spring. When the preset pressure is exceeded, the diaphragm is forced up and chemical flows through the valve to the injection point. The valves are preset for 50 psi, however they are field adjustable from 10 - 150 psi via the adjustment screw. Installation should be as close to the injection point as possible to prevent chemical line drainage, and it is most important that all chemical system equipment such as pulsation dampeners and pressure gauges are between the pump and back pressure valve.

TYPICAL INSTALLATION



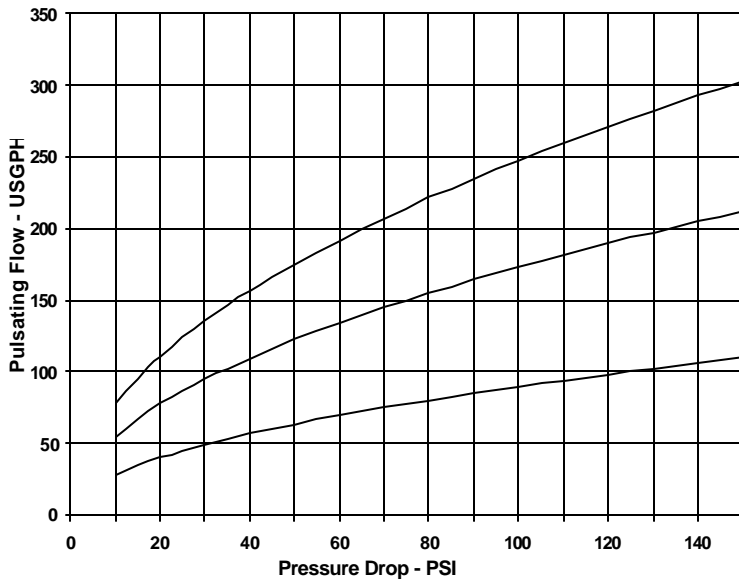
CALL 1 - 800 - GRIFFCO

Bulletin # BPV1003-2001

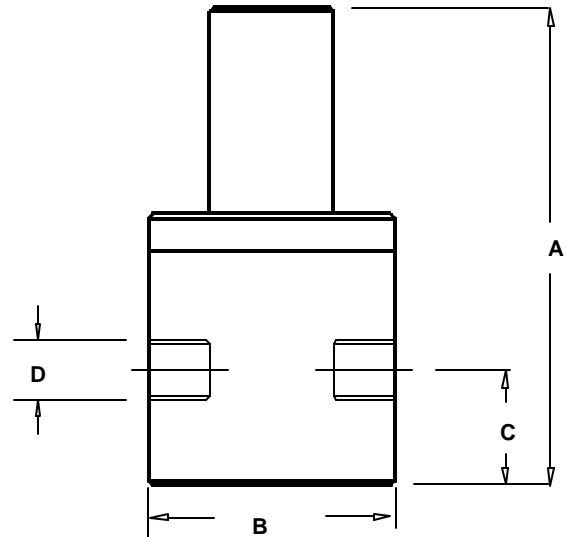
Technical Data:

Sizes: Model BPT		1/4", 3/8", 1/2"			
Connections:		NPT and Socket			
Pressure Adjustment		10 - 50 psi, 10 - 150 psi, 50 - 350 psi			
Flow Rates @ 150 psi		Shipping Weight: lbs			
Size	Pulsating	Continuous	Plastic	Metal / Plastic Top	Metal / Metal Top
1/4"	100 USgph	5 USgpm	1.0	2.5	3.0
3/8"	200 USgph	10 USgpm	1.0	2.5	3.0
1/2"	300 USgph	15 USgpm	1.0	3.0	3.5
Max Temperature: (°F)		Plastic: 140° ; Metal: 300°, (Peak Short Term 390°)			
Materials of Construction:					
Diaphragm		PTFE / EPDM, Optional: Viton & PTFE / Viton			
Valve Top		Standard: PVC (Threaded to Plastic Valves, Bolted to Metal Valves) Optional: CPVC, Steel, 316 SS, (Alloy tops fit alloy valves ONLY)			
Valve Body		PVC, CPVC, PP, PTFE, PVDF, 316 SS, A 20, Hast. C, Others on Request			

Performance Curves:



Dimensions:



Product Codes For Ordering:

BPT

1	2	3
1 = Size	2 = Material	3 = Options
025 - 1/4"	P - PVC	V - Viton Diaphragm
038 - 3/8"	CP - CPVC	S - Socket Connections
050 - 1/2"	PP - Polypro	F - Flanged Connections
	T - PTFE	OS - Optional Steel Top
	K - PVDF	OSS - Optional 316 SS Top
	S - 316 SS	MS - 50 - 350 psi Valve, SteelTop
	A - Alloy 20	MSS - 50 - 350 psi; 316 SS Top
	C - Hastalloy C	AR - Optional Air Release Port

D	A	B	C
1/4"	3.90	2.375	0.75
3/8"	3.90	2.375	0.75
1/2"	4.60	2.375	1.10

Note: Options OS, OSS, MS, & MSS are only for use on 316SS, A20, & Hast C Valves.

For more detailed information visit us at www.griffcovalve.com