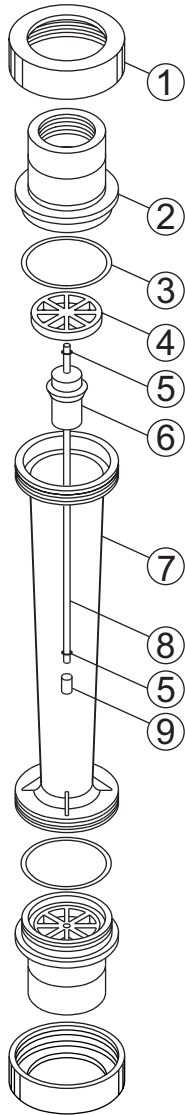


## F-451 Exploded View and Parts List



| Item | Catalog   | Description   | Amount |
|------|---|---|--------|
| 1    | F-45038N  | Union Nut   | 2      |
| 2    | F-45030N<br>F-45047N<br>F-45039N<br>F-45036                       | Adapter, vertical, 1" F/NPT PSF<br>Adapter, vertical, 1" F/NPT Brass<br>Adapter, vertical, 1" sweat Brass<br>Adapter, vertical, 1-1/2" M/NPT  | 2      |
| 3    | 2-136V  | O-Ring 2-136 Viton  | 2      |
| 4    | F-45025   | Wireholder, Top   | 1      |
| 5    | 2-006A  | Float Stop, .5-6, 1-10, 2-20, 8-80  | 1      |
| 6    | F-45032T<br>F-45033<br>F-45054T<br>F-45035<br>F-45035H<br>F-45037 | Float, .5 - 6 GPM PTFE<br>Float, 1 - 10 GPM, Stainless Steel<br>Float, 1 - 10 GPM, PTFE<br>Float, 2 - 20 GPM, 8 - 80 SCFM, SS<br>Float, 2 - 20 GPM, 8 - 80 SCFM, Hastelloy<br>Float, 3 - 30 GPM, SS   | 1      |
| 7    | F-45023N-4<br>F-45023N<br>F-45023N-1<br>F-45023N-2<br>F-45023N-3  | .5 - 6 GPM / 2 - 20 LPM Polysulfone<br>1 - 10 GPM / 4 - 40 LPM Polysulfone<br>2 - 20 GPM / 7.5 - 75 LPM Polysulfone<br>3 - 30 GPM / 10 - 110 LPM Polysulfone<br>4 - 40 GPM / 15 - 155 LPM Polysulfone | 1      |
| 8    | F-45028<br>F-45028H<br>F-45028-2<br>F-45028H-2                    | Guide Wire, .5-6, 1-10, 2-20,8-80 SS<br>Guide Wire, .5-6, 1-10, 2-20,8-80 Hastelloy<br>Guide Wire, SS<br>Guide Wire, Hastelloy  | 1      |
| 9    | F-45046   | Wireholder, .5-6, 1-10, 2-20, 8-80  | 1      |
| Not  | F-45034S  | Shield, clear polycarbonate   | 1      |
| Not  | F-45034   | Adapter, for shield, PVC  | 2      |