

MASTERFLEX® LIS® washdown modular drives



- For wet or hostile environments
- Protected from dust and strong jets of water
- Deliver flow rates from 0.36 to 3400 mL/min (up to 54 GPH)
- Multichannel pumping
- Reversible motor
- Manual controls on front panel
- Single-turn potentiometer speed control
- Forward/off/reverse switch with red LED power indicator
- Remote/internal control switch
- Washdown enclosure/motor
- 4 to 20 mA remote variable-speed control
- Interface via terminal strip inside enclosure

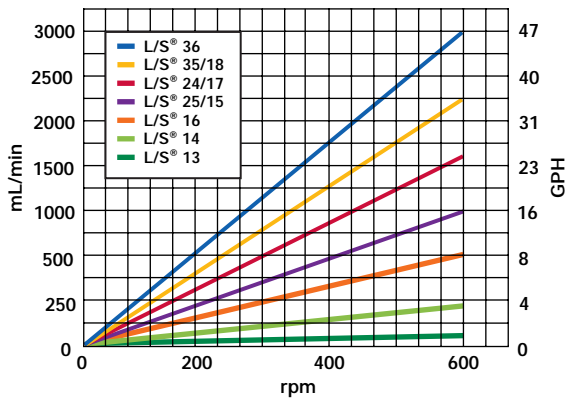


Washdown variable-speed drive 955-1010 includes an Easy-Load® II pump head

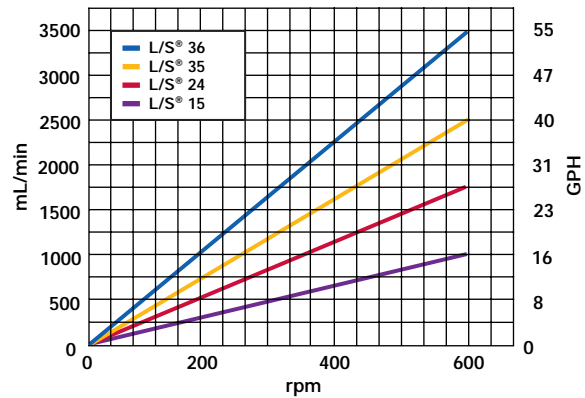


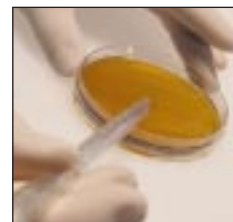
Washdown modular variable-speed drive 965-1010 includes a High-Performance pump head

Flow Curves
L/S® Easy-Load® II Pump Head



Flow Curves
L/S® High-Performance Pump Head





Washdown modular variable-speed drive 965-1010 includes a High-Performance pump head

Motor rpm	Masterflex® L/S® precision tubing sizes (thin wall)						Masterflex® L/S® high-performance precision tubing sizes (thick wall)			
	L/S® 13	L/S® 14	L/S® 16	L/S® 25	L/S® 17	L/S® 18	L/S® 15	L/S® 24	L/S® 35	L/S® 36
6 to 600	0.36 to 36 (0.005 to 0.5)	1.3 to 130 (0.02 to 2.04)	4.8 to 480 (0.72 to 7.56)	10 to 1000 (0.12 to 15.6)	17 to 1700 (0.24 to 26.4)	23 to 2300 (0.36 to 36.5)	10 to 1000 (0.12 to 15.6)	17 to 1700 (0.24 to 26.4)	23 to 2300 (0.36 to 36.5)	29 to 2900 (0.46 to 46)

Note: Flow ranges were determined using water at room temperature with zero back pressure and zero suction lift.

*Up to 3400 mL/min (54 GPH) with High-Performance pump head.



Catalog number	VA-955-1010	VA-955-1015	VA-956-1010	VA-956-1015	VA-965-1010	VA-965-1015
Included pump head	Easy-Load II (thin wall)		Easy-Load II (thick wall)		High-Performance (thick wall)	
Number of heads accepted	2				1	
rpm	6 to 600					
Voltage/Frequency VAC (50/60Hz)	90 to 130	190 to 260	90 to 130	190 to 260	90 to 130	190 to 260
Fuse rating (250 V)	3 A	1.5 A	3 A	1.5 A	3 A	1.5 A
Motor type	Continuous duty, TENV, permanent magnet DC, permanent lubricated bearings					
Motor/Speed control type	Single-turn potentiometer, solid-state circuit					
Speed regulation (Repeatability)	±10%					
Operating temperature	0 to 40°C (32 to 104°F)					
Storage temperature	10 to 60°C (-49 to 149°F)					
IP rating	IP56					
Controller dimensions (L x W x H)	13.6 cm x 16.5 cm x 20 cm (5 1/8" x 6 1/2" x 8")					
Footprint (L x W x H)	20 cm x 9.7 cm x 11.7 cm (7 1/2" x 3 13/16" x 4 5/8")					
Shipping weight	9.1 kg (20 lb)				9.8 kg (21.5 lb)	