



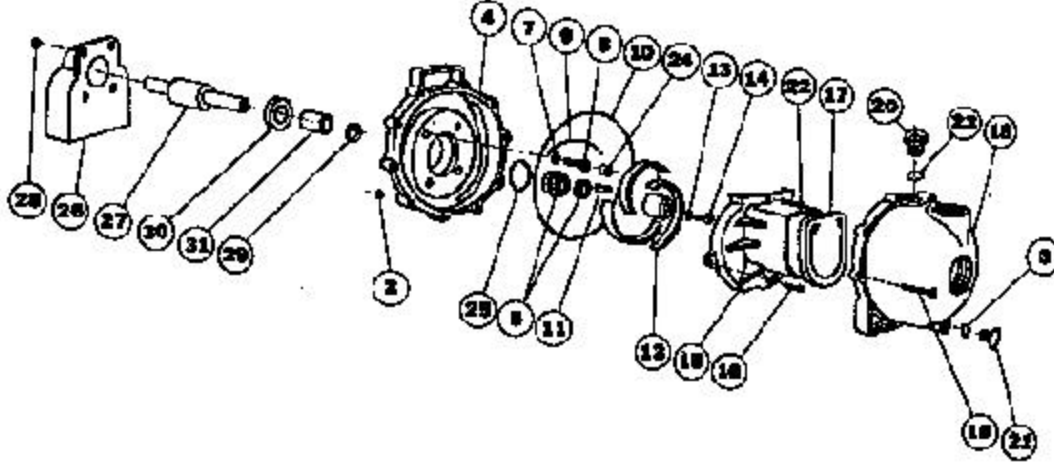
**MODELS**  
90P 93P  
91P

# OBERDORFER

## THERMOPLASTIC SELF PRIMING CENTRIFUGAL PUMPS



### EXPLODED VIEW AND PARTS LIST

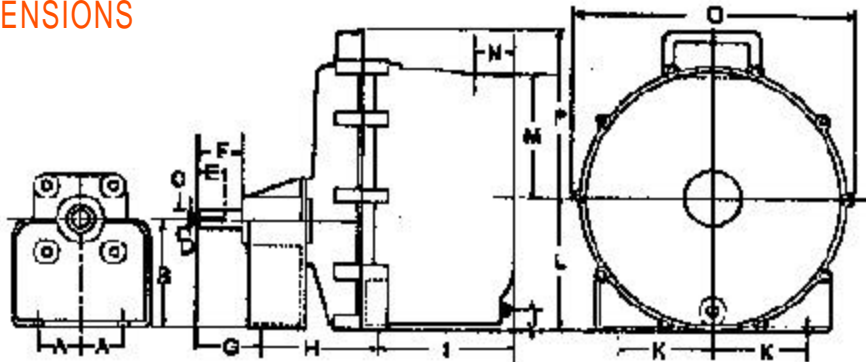


Repair Kit No.	Pump No.	2	3	4	5	7	8	9	10	11	12	13	14	15	16
		Hex Nut	O-Ring	Bracket	Seal Assy.	O-Ring	Screw	O-Ring Segment	O-Ring	Key	Impeller	O-Ring	Screw	Volute	Screw
		10 Req'd	1 Req'd	1 Req'd	1 Req'd	4 Req'd	4 Req'd	1 Req'd	1 Req'd	1 Req'd	1 Req'd	1 Req'd	1 Req'd	1 Req'd	2 Req'd
024-704	90P	721-00	1009-71	703-30	714-11	717-71	728-10	754-71	719-71	718-00	704-30	717-71	716-10	702-30	725-10
024-706	91P	721-00	1009-71	703-30	714-11	717-71	728-10	754-71	719-71	718-00	704-30	717-71	716-10	702-30	725-10
024-706	93P	721-00	1009-71	703-30	714-11	717-71	728-10	754-71	719-71	718-00	704-30	717-71	716-10	702-30	725-10

Pump No.	17	18	19	20	21	22	23	24	25	26	27	28	29	30	31
	Check Valve	Body	Screw	Filler Plug	Drain Plug	Volute Screw	O-Ring	Screw Plug	O-Ring	Bearing Pedestal	Bearing Assy.	Hex Nut	Shim	Slinger	Shaft Sleeve
	1 Req'd	1 Req'd	10 Req'd	1 Req'd	1 Req'd	1 Req'd	1 Req'd	4 Req'd	1 Req'd	1 Req'd	1 Req'd	4 Req'd	As Req'd	1 Req'd	1 Req'd
90P	705-71	1002-30	720-00	722-30	723-30	771-10	765-71	750-40	976-71	759-20	777-00	745-00	778-11	884-71	882-90
91P	705-71	1002-30	720-00	722-30	723-30	771-10	765-71	750-40	976-71	759-20	777-00	745-00	778-11	884-71	882-90
93P	705-71	1002-30	720-00	722-30	723-30	771-10	765-71	750-40	976-71	759-20	777-00	745-00	778-11	884-71	882-90

Note: Repair Kit includes 3, 5, 7, 9, 11, 12, 13, 14, 16, 22, 23, 25, & 29

### DIMENSIONS



Pump No.	Suction & Discharge	A	B	C	D	E	F	G	H	I	J	K	L	M	N	O	P
90P	2"NPT	1.6	4.17	0.75	0.188	1	1.8	2.5	4.6	5.3	0.8	3.7	5.17	4.7	1.5	11	6.5
91P	2" NPT	1.6	4.17	0.75	0.188	1	1.8	2.5	4.6	5.3	0.8	3.7	5.17	4.7	1.5	11	6.5
93P	3" NPT	1.6	4.17	0.75	0.188	1	1.8	2.5	4.6	7.8	0.8	3.7	5.17	4.45	1.95	11	6.5

7/00

Specifications are subject to change without notice.