



OBERDORFER

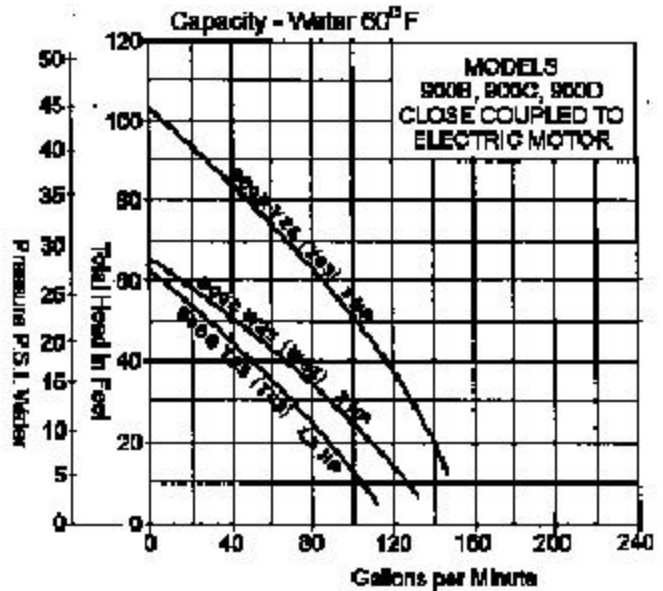
THERMOPLASTIC SELF PRIMING CENTRIFUGAL PUMPS

**MODEL
900**

ELECTRIC MOTOR DRIVE
PIPE SIZE 2" INLET AND OUTLET



See model 90P, 91P, 93P for pedestal drive.
See models 900G, 910G, 930G, 940G for close coupled gas engine drive.



SUCTION LIFT AND PRIMING TIMES

2 inch suction line - 3600 R.P.M.

| | | | | | |
|------------------------|----|----|----|----|----|
| Suction Lift (Feet) | 5 | 10 | 15 | 20 | 25 |
| Priming Time (Seconds) | 20 | 40 | 60 | 70 | 80 |

| Pump No. | Electric Motor |
|----------|--|
| 900B-T25 | 1 1/2 H.P., 3450 R.P.M., 115V, Single Phase |
| 900B-T63 | 1 1/2 H.P., 3450 R.P.M., 220/440V, Polyphase |
| 900C-W25 | 2 H.P., 3450 R.P.M., 115V, Single Phase |
| 900C-W63 | 2 H.P., 3450 R.P.M., 220/440V, Polyphase |
| 900D-Y25 | 3 H.P., 3450 R.P.M., 115V, Single Phase |
| 900D-Y63 | 3 H.P., 3450 R.P.M., 220/440V, Polyphase |

n To specify seal made of Vitont & rubber parts of EPDM, add -12 to basic pump numbers. (Example 90P-12). Typical applications include agricultural chemicals.
n To specify rubber Volute liner, add -13 to basic pump numbers (Example 90P-13). Typical applications include dirty liquids.

FEATURES

- n Mechanical Seals - Ceramic Wearface Mating with Lapped Carbon
- n Seal Elastomer Standard is Buna - Also available in Viton and Ethylene Propylene (EPDM)
- n Rubber Volute Liner available for dirty liquids
- n Built-in Check Valve prevents backflow when pump is shut down
- n Self Priming, quiet, efficient, long life
- n Tough, Lightweight Thermoplastic Polyester Housings & Impellers for Chemical and Wear Resistance.
- n Excellent corrosion resistance to water, acids, & most organic solvents - liquids normally requiring expensive pump liners or stainless steel construction

Note: Vitont is a registered trademark of DuPont Dow Elastomers.

APPLICATIONS

INDUSTRIAL - CHEMICAL - AGRICULTURE
MARINE - CONTRACTOR - UTILITY

- n General Water Supply
- n Emergency Stand-by
- n Lawn Sprinkling
- n Pumping from Underground Tanks
- n Industrial Sump Drainage
- n Recirculation of Process Liquids
- n Dewatering of Ditches, Cellars, Ponds
- n Washing Down Barns or Equipment
- n Irrigation - Flood Furrow or Sprinkler
- n Pumping Cess Pools

TEMPERATURE RANGE: -20°F to 130°F

SPECIAL MODEL DESIGNATIONS

n To specify seal made of Vitont & rubber parts of Viton, add -10 to basic pump numbers. (Example 90P-10). Typical applications include solvents and chemicals.

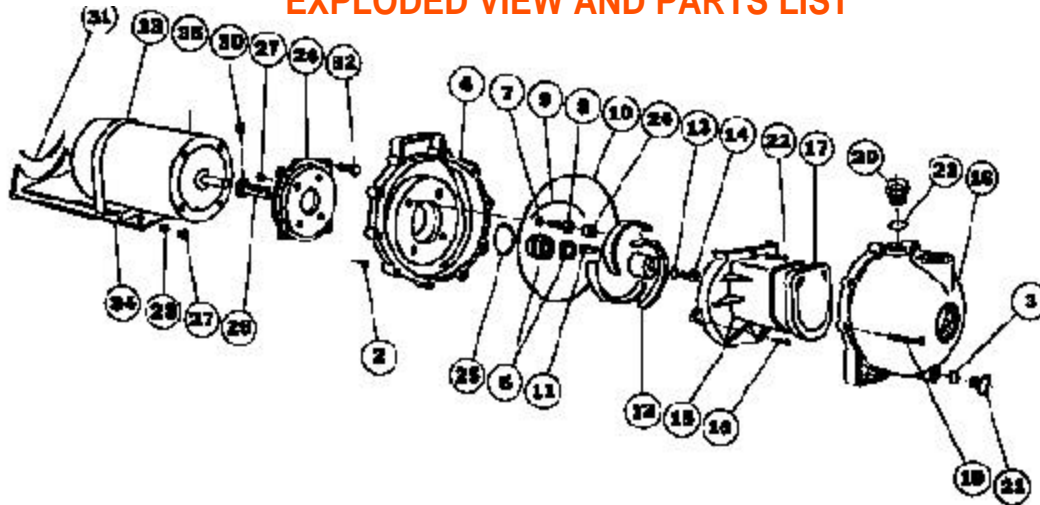
MODEL
900

OBERDORFER

THERMOPLASTIC SELF PRIMING CENTRIFUGAL PUMPS



EXPLODED VIEW AND PARTS LIST



| Repair Kit No. | Pump No. | 2 | 3 | 4 | 5 | 7 | 8 | 9 | 10 | 11 | 12 | 13 | 14 | 15 | 16 | 17 | 18 |
|----------------|----------|----------|---------|---------|------------|---------|---------|----------------|---------|---------|----------|---------|---------|---------|---------|-------------|---------|
| | | Hex Nut | O-ring | Bracket | Seal Assy. | O-Ring | Screw | O-Ring Segment | O-Ring | Key | Impeller | O-Ring | Screw | Volute | Screw | Check Valve | Body |
| | | 10 Req'd | 1 Req'd | 1 Req'd | 1 Req'd | 4 Req'd | 4 Req'd | 1 Req'd | 1 Req'd | 1 Req'd | 1 Req'd | 1 Req'd | 1 Req'd | 1 Req'd | 2 Req'd | 1 Req'd | 1 Req'd |
| 024-667 | 900B-T25 | 721-00 | 1009-71 | 703-30 | 714-11 | 717-71 | 728-10 | 754-71 | 719-71 | 718-00 | 667-30 | 717-71 | 716-10 | 954-30 | 725-10 | 705-71 | 1002-30 |
| 024-667 | 900B-T63 | 721-00 | 1009-71 | 703-30 | 714-11 | 717-71 | 728-10 | 754-71 | 719-71 | 718-00 | 667-30 | 717-71 | 716-10 | 954-30 | 725-10 | 705-71 | 1002-30 |
| 024-667 | 900C-W25 | 721-00 | 1009-71 | 703-30 | 714-11 | 717-71 | 728-10 | 754-71 | 719-71 | 718-00 | 667-30 | 717-71 | 716-10 | 954-30 | 725-10 | 705-71 | 1002-30 |
| 024-667 | 900C-W63 | 721-00 | 1009-71 | 703-30 | 714-11 | 717-71 | 728-10 | 754-71 | 719-71 | 718-00 | 667-30 | 717-71 | 716-10 | 954-30 | 725-10 | 705-71 | 1002-30 |
| 024-704 | 900D-Y25 | 721-00 | 1009-71 | 703-30 | 714-11 | 717-71 | 728-10 | 754-71 | 719-71 | 718-00 | 667-30 | 717-71 | 716-10 | 702-30 | 725-10 | 705-71 | 1002-30 |
| 024-704 | 900D-Y63 | 721-00 | 1009-71 | 703-30 | 714-11 | 717-71 | 728-10 | 754-71 | 719-71 | 718-00 | 667-30 | 717-71 | 716-10 | 702-30 | 725-10 | 705-71 | 1002-30 |

| Pump No. | 19 | 20 | 21 | 22 | 23 | 24 | 25 | 26 | 27 | 28 | 29 | 30 | 31 | 32 | 33 | 34 | 35 |
|----------|----------|-------------|------------|--------------|---------|------------|---------|---------|---------|---------|---------------|-----------|--------------|---------|---------|------------|---------|
| | Screw | Filler Plug | Drain Plug | Volute Screw | O-Ring | Screw Plug | O-Ring | Adapter | Hex Nut | Washer | Shaft Adapter | Set Screw | Rubber Strip | Screw | Strap | Base Plate | Motor |
| | 10 Req'd | 1 Req'd | 1 Req'd | 1 Req'd | 1 Req'd | 4 Req'd | 1 Req'd | 1 Req'd | 6 Req'd | 2 Req'd | 1 Req'd | 2 Req'd | 1 Req'd | 4 Req'd | 1 Req'd | 1 Req'd | 1 Req'd |
| 900B-T25 | 720-00 | 722-30 | 723-30 | 997-10 | 765-71 | 750-40 | 976-71 | 1010-20 | 745-00 | 730-00 | 1014-90 | 883-00 | 874-90 | 1015-00 | 934-10 | 867-01 | 7538 |
| 900B-T63 | 720-00 | 722-30 | 723-30 | 997-10 | 765-71 | 750-40 | 976-71 | 1010-20 | 745-00 | 730-00 | 1014-90 | 883-00 | 874-90 | 1015-00 | 934-10 | 867-01 | 7541 |
| 900C-W25 | 720-00 | 722-30 | 723-30 | 997-10 | 765-71 | 750-40 | 976-71 | 1010-20 | 745-00 | 730-00 | 1014-90 | 883-00 | 874-90 | 1015-00 | 934-10 | 867-01 | 7539 |
| 900C-W63 | 720-00 | 722-30 | 723-30 | 997-10 | 765-71 | 750-40 | 976-71 | 1010-20 | 745-00 | 730-00 | 1014-90 | 883-00 | 874-90 | 1015-00 | 934-10 | 867-01 | 7542 |
| 900D-Y25 | 720-00 | 722-30 | 723-30 | 771-10 | 765-71 | 750-40 | 976-71 | 1010-20 | 745-00 | 730-00 | 1014-90 | 883-00 | 874-90 | 1015-00 | 934-10 | 867-01 | 7540 |
| 900D-Y63 | 720-00 | 722-30 | 723-30 | 771-10 | 765-17 | 750-40 | 976-71 | 1010-20 | 745-00 | 730-00 | 1014-90 | 883-00 | 874-90 | 1015-00 | 934-10 | 867-01 | 7543 |

Note: Repair Kit includes: 5, 7, 9, 11, 12, 13, 14, 16, 22, 23, & 25

DIMENSIONS

