

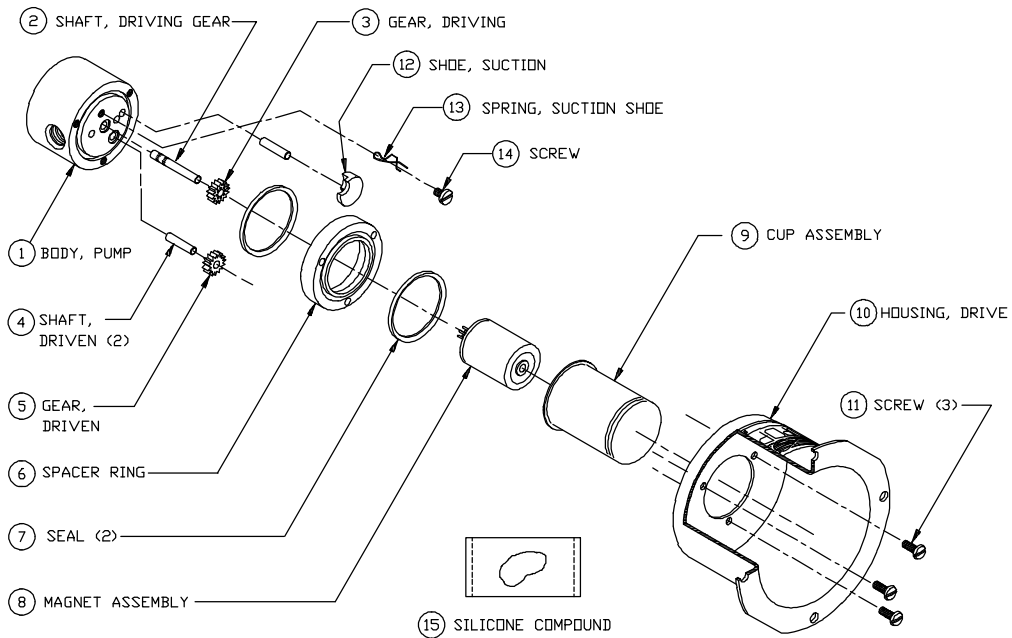


PART NUMBER: 6538

SERVICE INSTRUCTIONS: 6538

REVISION			
LTR.	DESCRIPTION	DATE	BY
G	REVISED PER ECN - 5164	1/12/01	C.M.A.

FOR THE FOLLOWING INTEGRAL SERIES PUMPHEADS: G184, G185, G187, G1840



GENERAL:

1. All service work should be performed in a clean area.
2. Care should be taken to avoid scratching any sealing surfaces or allowing metal chips to come in contact with the Driven Magnet Assembly.
3. An even, light coat of high vacuum silicone grease (15) (Dow Corning or equiv.) should be applied to all seals or O-Rings.
4. O-Rings with chamfers should always be installed with the chamfer up, away from the groove.
5. All assembly screws should be tightened evenly and in an alternating pattern.
6. Only Micropump factory authorized replacement parts should be used when servicing any Micropump products.

SPECIFIC:

1. Do not attempt to remove Driving Gear Shaft (2) from Pump Body (1). The Shaft (2) position is preset at the factory. (If replacement of shaft is necessary, pump must be returned to the factory for repair.)
2. After installing the Suction Shoe (12), locate the Suction Shoe Spring (13) so that it holds the Suction Shoe in place. Then locate Screw (14) through the Spring, into the Pump Body (1) (as shown above) and tighten the screw.
3. Engage drive pins on the Magnet Assembly (8) with Driving Gear (3). Gears and Magnet should rotate freely.
4. Complete assembly as shown above.

NOTE: Your Integral Series Pump Drive is not field serviceable. Contact Micropump for factory service.

MICROPUMP, INC.

A Unit of IDEX Corporation

PO Box 8975, Vancouver, WA 98668-8975 • Phone: 360/253-2008 • Fax: 360/253-8294

MICROPUMP LIMITED

A Subsidiary of Micropump, Inc.

Forge Close, Eaton Socon, St. Neots, Cambridgeshire, PE 19 3TP England, • Phone: (44) (0) 1480-219844 • Fax: (44) (0) 1480-476959

