

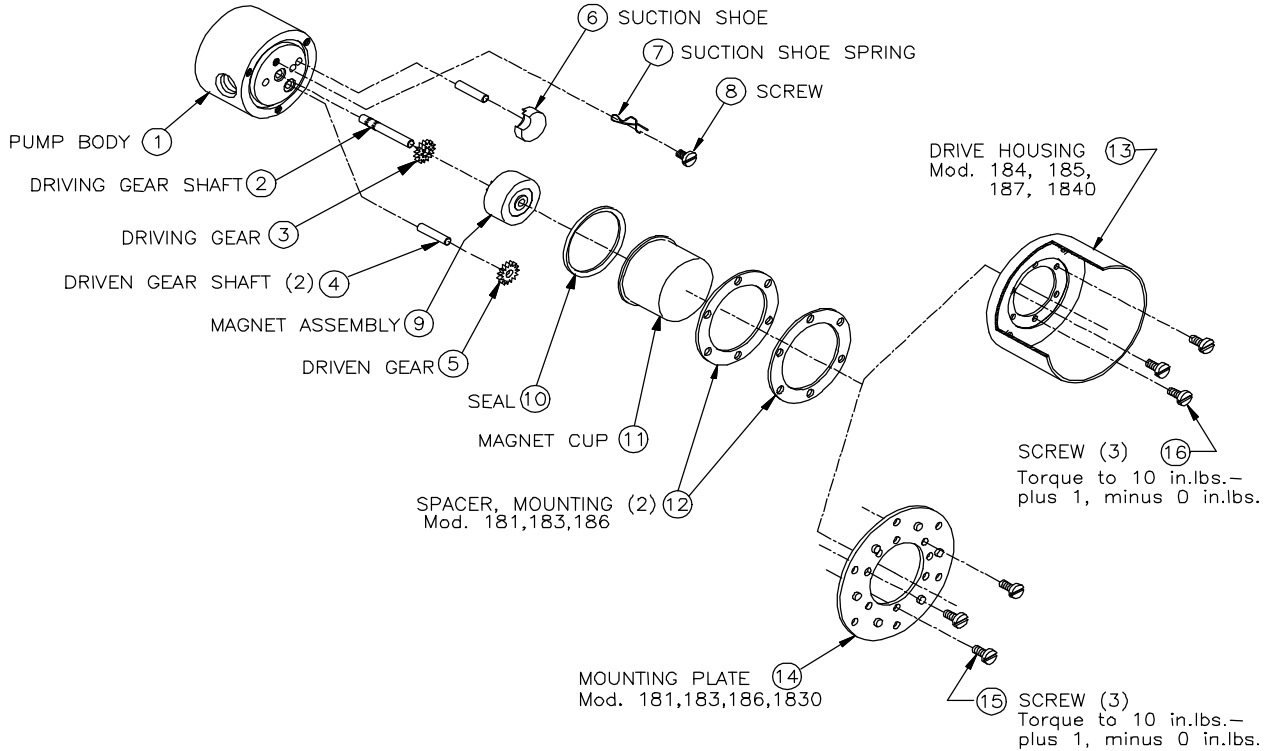


PART NUMBER: 5834

**SERVICE INSTRUCTIONS:**

MOD: 181/183/184/185/186/187/1830/1840

REVISION			
LTR.	DESCRIPTION	DATE	BY
D	REVISED PER ECN-4898	1/25/00	DMS

**GENERAL:**

1. All service work should be performed in a clean area.
2. Care should be taken to avoid scratching any sealing surfaces or allowing metal chips to come in contact with the Driven Magnet Assembly.
3. An even, light coat of high vacuum silicone grease (Dow Corning or equiv.) should be applied to all seals or O-Rings.
4. O-Rings with chamfers should always be installed with the chamfer up, away from the groove.
5. All assembly screws should be tightened evenly and in an alternating pattern.
6. Only Micropump factory authorized replacement parts should be used when servicing any Micropump products.

**SPECIFIC:**

1. Do not attempt to remove Driving Gear Shaft (2) from Pump Body (1). The Shaft (2) position is preset at the factory. (If replacement of shaft is necessary, pump must be returned to the factory for repair.)
2. After installing the Suction Shoe (6), locate the Suction Shoe Spring (7) so that it holds the Suction Shoe in place. Then locate Screw (8) through the Spring, into the Pump Body (1)(as shown above) and tighten the Screw.
3. Engage drive pins on the Magnet Assembly (9) with Driving Gear (3). Gears and Magnet should rotate freely.
4. Complete assembly as shown above.

**MICROPUMP, INC.****A Unit of IDEX Corporation**

PO Box 8975, Vancouver, WA 98668-8975 • Phone: 360/253-2008 • Fax: 360/253-8294

**MICROPUMP LIMITED****A Subsidiary of Micropump, Inc.**

Forge Close, Eaton Socon, St. Neots, Cambridgeshire, PE 19 3TP England, • Phone: (44) (0) 1480-219844 • Fax: (44) (0) 1480-476959

<b>PART NUMBER:</b>	5834
---------------------	------

<b>REVISION</b>			
LTR.	DESCRIPTION	DATE	BY
D	REVISED PER ECN-4898	1/25/00	DMS

**SPARE PARTS LIST**

FOR GEAR PUMP MODEL 181/183/184/185/186/187/1840/1830

PART NO. 82114 (181), 82115 (183), 81113 (184), 81114 (185), 82092 (186), 81112 (187), 81726 (1840), 81473, (1830)

<b>ITEM NO.</b>	<b>PART NO.</b>	<b>DESCRIPTION</b>	<b>UNITS PER ASSEMBLY</b>
1	50207	BODY, PUMP	1
2	5548	SHAFT, DRIVING	1
3		* GEAR, DRIVING	1
4	50017	SUCTION SHOE POST (FOR 181,183,184, 185, 186 ONLY)	1
4	50017	SHAFT, DRIVEN	1
5		* GEAR, DRIVEN	1
6		* SUCTION SHOE	1
7	50016	* SHOE SPRING	1
8	50039	SCREW	1
9	40036	MAGNET ASSEMBLY, DRIVEN	1
10	2619	SEAL	1
11	50210	CUP	1
12	5675	SPACER, MOUNTING (FOR: 181, 183, 186)	2
13	5508	HOUSING, DRIVE (FOR 184, 185, 187, 1840)	1
14	2301	PLATE, MOUNTING (FOR 186, 181, 183, 1830)	1
15	50094	SCREW (FOR 186, 181, 183, 1830)	3
16	795	SCREW (FOR 184, 185, 187, 1840)	3
		** PUMP ASSEMBLY COMPONENTS INCLUDE MAGNETS, DRIVEN & DRIVING GEARS, AND SUCTION SHOE.	
	82134	GEAR SERVICE KIT (FOR 186, 187)	
	82135	GEAR SERVICE KIT (FOR 181, 184)	
	82136	GEAR SERVICE KIT (FOR 183, 185)	
	81473	GEAR SERVICE KIT (FOR 1830, 1840)	
		* PARTS AVAILABLE IN GEAR SERVICE KIT ONLY	
		** PARTS AVAILABLE ONLY IN GEAR SERVICE KIT MOD. 1830, 1840.	

Prices subject to change without notice.

**MICROPUMP, INC.**

**A Unit of IDEX Corporation**

PO Box 8975, Vancouver, WA 98668-8975 • Phone: 360/253-2008 • Fax: 360/253-8294

**MICROPUMP LIMITED**

**A Subsidiary of Micropump, Inc.**

Forge Close, Eaton Socon, St. Neots, Cambridgeshire, PE 19 3TP England, • Phone: (44) (0) 1480-219844 • Fax: (44) (0) 1480-476959