

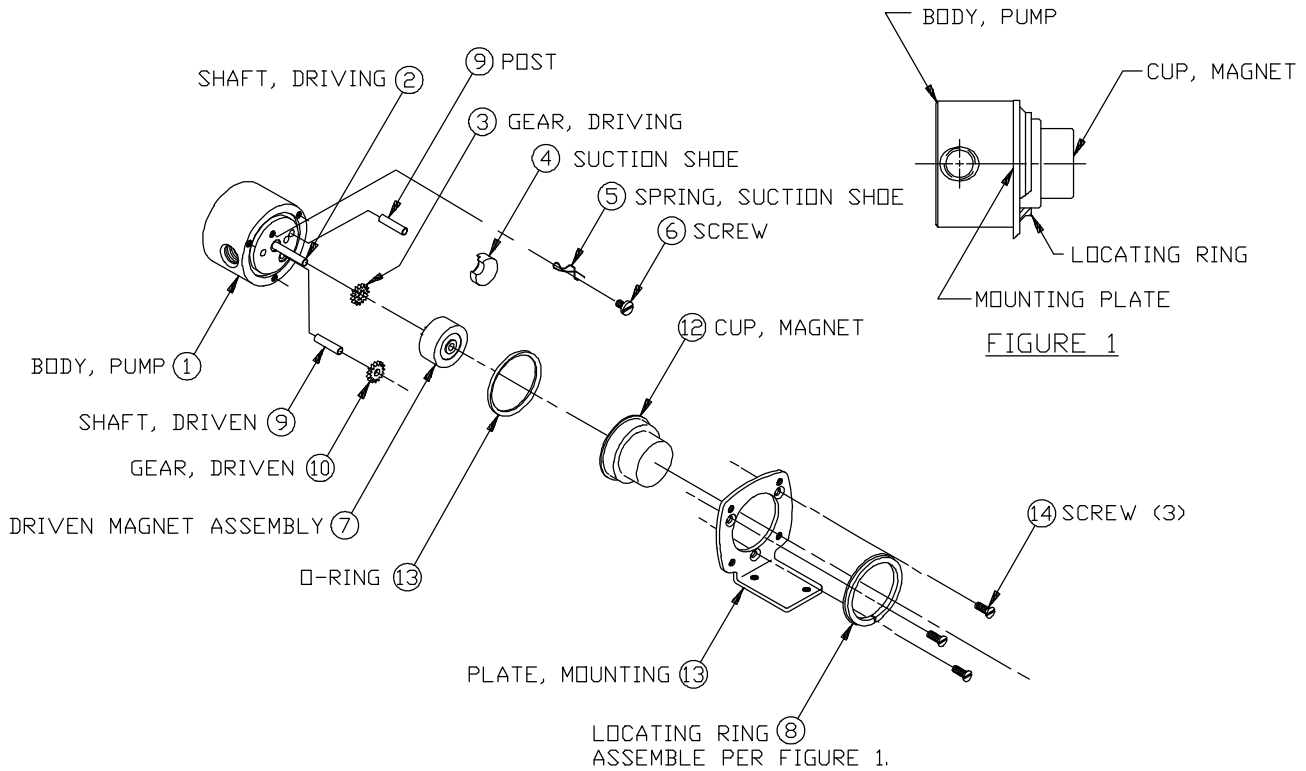


PART NUMBER: 5833

SERVICE INSTRUCTIONS:

MOD: 180, 182, 188, 1800

REVISION			
LTR.	DESCRIPTION	DATE	BY
C	REVISED PER ECN-4428	4/16/97	DPM



**GENERAL:**

1. All service work should be performed in a clean area.
2. Care should be taken to avoid scratching any sealing surfaces or allowing metal chips to come in contact with the driven magnet assembly.
3. An even, light coat of high vacuum silicone grease (Dow Corning or equivalent) should be applied to all seals or O-Rings.
4. O-Rings with chamfers should always be installed with the chamfer up, away from the groove.
5. All assembly screws should be tightened evenly and in an alternating pattern.
6. Only Micropump factory authorized replacement parts should be used when servicing any Micropump products.

**SPECIFIC:**

1. Do not attempt to remove Driving Gear Shaft (2) from Pump Body (1). The Shaft (2) position is preset at the factory. (If replacement of shaft is necessary, pump must be returned to the factory for repair.)
2. After installing the Suction Shoe (4), locate the Suction Shoe Spring (5) so that it holds the Suction Shoe in place. Then locate the Screw (6) through the Spring, into the Pump Body (1) (as shown) and tighten the Screw (6).
3. Engage drive pins on the Driven Magnet (7) with Driving Gear (3). Gears and Magnet should rotate freely.
4. Complete assembly as shown above.

**MICROPUMP, INC.**

**A Unit of IDEX Corporation**

PO Box 8975, Vancouver, WA 98668-8975 • Phone: 360/253-2008 • Fax: 360/253-8294

**MICROPUMP LIMITED**

**A Subsidiary of Micropump, Inc.**

Forge Close, Eaton Socon, St. Neots, Cambridgeshire, PE 19 3TP England, • Phone: (44) (0) 1480-219844 • Fax: (44) (0) 1480-476959

<b>PART NUMBER:</b>	5833
---------------------	------

<b>REVISION</b>			
LTR.	DESCRIPTION	DATE	BY
C	REVISED PER ECN-4428	4/16/97	DPM

**SPARE PARTS LIST**

FOR GEAR PUMP MODEL 180/182/188/1800

PART NO. (180) 82116, (182) 82117, (188) 82093, (1800) 81725

<b>ITEM NO.</b>	<b>PART NO.</b>	<b>DESCRIPTION</b>	<b>UNITS PER ASSEMBLY</b>
1	50207	BODY, PUMP	1
2	5548	SHAFT, DRIVING (FOR O/C 1800 ONLY)	1
3		* GEAR DRIVING	1
4		* SUCTION SHOE	1
5	50016	* SPRING, SUCTION SHOE	1
6	50039	* SCREW	1
7	40002	DRIVEN MAGNET ASSEMBLY	1
8	5869	RING, LOCATING	1
9	50017	* SHAFT DRIVEN	1
9	50017	* SHAFT DRIVEN (USED AS SUCTION SHOE POST FOR MOD 180, 182, 188)	1
10		* GEAR, DRIVEN	1
11	2619	* O-RING	1
12	50211	CUP, MAGNET	1
13	4546	PLATE, MOUNTING	1
14	1346	SCREW	3
	795	SCREW	2
	1458	GROMMET	4
	4129	BRACKET	1
	81410	** PUMP ASSEMBLY COMPONENTS INCLUDE: MAGNET ASSEMBLY DRIVEN AND DRIVING GEARS SUCTION SHOE	1
	82134	GEAR SERVICE KIT (MOD. 188 ONLY)	
	82135	GEAR SERVICE KIT (MOD. 180 ONLY)	
	82136	GEAR SERVICE KIT (MOD. 182 ONLY)	
	81727	GEAR SERVICE KIT (MOD. 1800 ONLY)	
		* PARTS AVAILABLE IN GEAR SERVICE KIT ONLY.	
		** PARTS AVAILABLE ONLY IN GEAR SERVICE KIT MOD. 1800.	

Prices subject to change without notice.

**MICROPUMP, INC.**

**A Unit of IDEX Corporation**

PO Box 8975, Vancouver, WA 98668-8975 • Phone: 360/253-2008 • Fax: 360/253-8294

**MICROPUMP LIMITED**

**A Subsidiary of Micropump, Inc.**

Forge Close, Eaton Socon, St. Neots, Cambridgeshire, PE 19 3TP England, • Phone: (44) (0) 1480-219844 • Fax: (44) (0) 1480-476959